

Office of Attorney General
Bureau of Criminal Investigation

Crime in North Dakota, 2010

A Summary of Uniform Crime Report Data

Wayne Stenehjem
Attorney General

Prepared by
Colleen Weltz
UCR Program Manager
2011

INTRODUCTION

The North Dakota Uniform Crime Reporting (UCR) program involves the collection, compilation, and analysis of crime and arrest statistics reported by the various local law enforcement agencies throughout the state. Fifty sheriffs' departments and 49 police departments reported to the UCR program in 2010.

Law enforcement agencies may report UCR data in two ways:

INCIDENT-BASED REPORTING: Law enforcement agencies use a standard incident form to collect data on each incident reported to their respective agencies. This form collects much more detailed information than is collected using summary reporting. Data collected includes: type of incident, where and when the incident took place, victim characteristics, suspect/arrestee characteristics, property involved in the incident, etc. A total of 99 police departments and sheriffs' departments reported incident data for all or part of 2010.

In order to continue the statistical time-series begun with summary reporting, computer programs were written to extract summary data from the incident data reported. Crime in North Dakota, 2010 is a report on summary data.

SUMMARY REPORTING: Law enforcement agencies use a tally system to report the number of crime index offenses and arrests for each month. The North Dakota no longer has any agencies reporting summary data.

The federal counterpart of the North Dakota UCR program is the National UCR program under the direction of the Federal Bureau of Investigation (FBI). The UCR program has been used nationally and in North Dakota for many years to measure the extent, distribution and fluctuation of crime through the crime index. The crime index is not an absolute measure, but rather an indication of the amount and type of crime occurring in any given jurisdiction. The index is composed of seven crimes that are sub-classified as follows:

VIOLENT CRIME: Murder/Non-Negligent Manslaughter
Forcible Rape
Robbery
Aggravated Assault

PROPERTY CRIME: Burglary
Larceny/Theft
Motor Vehicle Theft

A Modified Crime Index is also calculated at the federal level. This includes arson as the fourth property crime and the eighth index offense. Data on arson is not included in this report.

Prior to an offense becoming recorded in the UCR program, it must be reported to the local law enforcement officials and reported by the local agency to the UCR program. Consequently, the UCR program only reflects reported crimes. Reporting of crimes depends on several factors,

including actual perception of an act as a crime, the probability of loss of status for reporting (as in cases of rape), and the perceived probability of action on the part of the law enforcement agency contacted.

Several types of data are gathered, including:

Offense data

- Number of known crime index offenses
- Type and value of stolen property
- Additional information on homicides and arson
- Law enforcement officers killed or assaulted

Arrest and Clearance Data

- Number and type of offenses cleared
- Number and type of index offenses involving juveniles cleared
- Number of persons arrested, by offense
- Characteristics of persons arrested (age, sex, race)

To allow for comparison among several geographic or jurisdictional areas with differing populations or to allow comparisons across time in an area undergoing population fluctuations, the UCR program provides for the calculation of crime rates to remove any potential biases created by population differences. Because a rate relates the incidence of activity to population, it is possible to measure annual fluctuations in criminal activity by comparing rates of crime reported in any given year with those reported in other years. National publications report crime rates calculated based on the number of reported offenses per 100,000 population. This publication provides crime rate information calculated in the same manner.

TABLE OF CONTENTS

<u>Introduction</u>	i
<u>Table of Contents</u>	iii
<u>North Dakota Crime Summary, 2010</u>	iv
<u>Crime Index Offense Analysis</u>	1
<u>Violent Crime</u>	6
<u>Murder/Non-Negligent Manslaughter</u>	8
<u>Forcible Rape</u>	10
<u>Robbery</u>	12
<u>Aggravated Assault</u>	15
<u>Property Crime</u>	17
<u>Burglary</u>	19
<u>Larceny/Theft</u>	22
<u>Motor Vehicle Theft</u>	25
<u>Crime Index Offenses by Reporting Jurisdiction</u>	28
<u>Arrest Analysis</u>	33
<u>Arrests in 2010</u>	34
<u>Arrest Analysis by Reporting Jurisdiction</u>	40
<u>Arrests 2001-2010</u>	41
<u>Drug Arrest Analysis</u>	49
<u>DUI Arrest Analysis</u>	53
<u>UCR Offense Definitions</u>	56
<u>Full-Time Law Enforcement Employees</u>	61

NORTH DAKOTA CRIME SUMMARY, 2010

In 2010, 12,427 crime index offenses were reported by local law enforcement agencies. This is a decrease of 3.1 percent from the total of 12,822 reported in 2009.

Crime index offenses include: murder/non-negligent manslaughter, forcible rape, robbery, aggravated assault, burglary, larceny/theft, and motor vehicle theft.

The Census Bureau estimate of North Dakota's population for 2010 is 672,591. The index crime rate per 100,000 population for 2010 was 1847.6. The index crime rate for 2009 was 1981.8 per 100,000 population. This is a 6.8 percent decrease in the crime rate.

The total number of reported violent index crimes (murder, rape, robbery, and aggravated assault) was 1,165. This represents an increase of 4.2 percent from the total of 1,118 reported in 2009. In 2008, 1,035 violent index crimes were reported.

Violent crime accounted for 9.4 percent of total index crimes reported in 2010.

Collectively, property crimes (burglary, larceny/theft and motor vehicle theft) decreased by 3.8 percent from 11,704 reported in 2009 to 11,262 reported in 2010.

Property crime accounted for 90.6 percent of total crime index offenses reported in 2010.

The 8,673 larceny/theft offenses reported in 2010 accounted for 69.8 percent of total index crimes.

More than \$11.9 million worth of property was reported stolen in 2010, with over 28 percent of that amount reported as recovered by law enforcement officials.

North Dakota law enforcement agencies reported 29,404 arrests in 2010. A total of 28,925 arrests was reported in 2009.

In 2010, juvenile arrests accounted for 21.2 percent of the total arrests. Juvenile arrests were 32.6 percent of the total arrests of crime index offenses.

The number of reported arrests in 2010 for DUI increased to 6,050 from 5,819 reported in 2009.

Arrests for drug offenses increased 13.4 percent from a 2009 total of 2,063 to 2,339 in 2010.

CRIME INDEX OFFENSE ANALYSIS

Crime Index Offenses

Crime index offenses include the violent crimes of murder/non-negligent manslaughter, forcible rape, robbery, and aggravated assault, and the property crimes of burglary, larceny/theft, and motor vehicle theft.

In 2010, 12,427 crime index offenses were reported by local law enforcement agencies. This is a decrease of 3.1 percent from the total of 12,822 reported in 2009.

The Census Bureau estimate of North Dakota's population for 2010 is 672,591. Based on that total, the index crime rate per 100,000 population for 2010 was 1847.6, as compared to 1981.8 for 2009. See the crime index offense summary on page 5 for crime rate information for the period 2001-2010.

More than 28 percent of crime index offenses were reported as cleared by arrest or exceptional means. The UCR program defines an offense as "cleared" by law enforcement when at least one person is arrested, charged with the commission of the offense, and turned over to the court for prosecution. Several crimes may be cleared by the arrest of one person, while the arrests of many persons may clear only one offense. Law enforcement agencies may clear a crime by exceptional means when some element beyond law enforcement control precludes the placing of formal charges against the offender. Examples of circumstances that allow such clearances are the death of the offender (suicide, justifiably killed by police or private citizen, etc.); the victim's refusal to cooperate with prosecution after the offender has been identified; or the denial of extradition.

In 2010, 3,326 arrests were reported for crime index offenses. Of that total, 32.6 percent were arrests of juveniles.

More than \$11.9 million worth of property was reported stolen in 2010, with 28.8 percent of that amount reported as recovered by law enforcement officials.

Crime Index Offenses Reported, 2010

Crime Index Offense	Number Reported	Percent of Total Index Offenses
Murder/Non-Negligent Manslaughter	11	0.1%
Forcible Rape	222	1.8
Robbery	85	0.7
Aggravated Assault	847	6.8
Violent Crime Subtotal	1,165	9.4
Burglary	1,826	14.7
Larceny/Theft	8,673	69.8
Motor Vehicle Theft	763	6.1
Property Crime Subtotal	11,262	90.6
Crime Index Offense Total	12,427	100.0

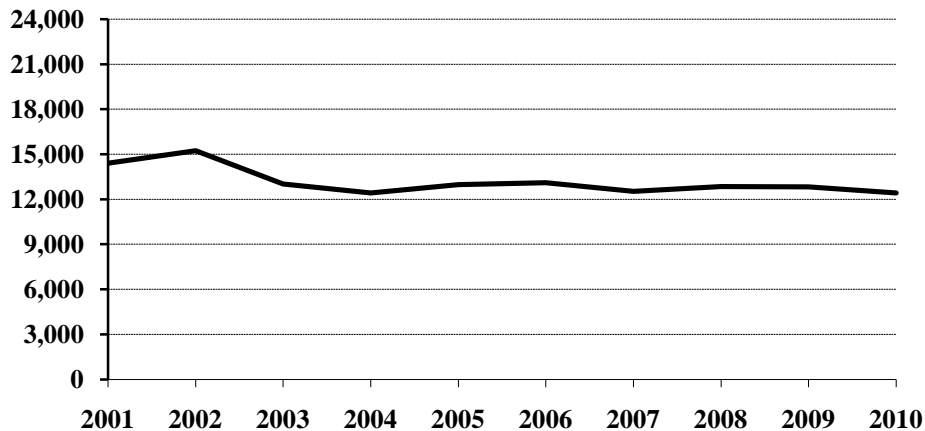
Comparison of Crime Index Offenses Reported, 2009-2010

Crime Index Offense	2009	2010	Percent Change
Murder/Non-Negligent Manslaughter	15	11	-26.7%
Forcible Rape	206	222	7.8
Rape by Force	197	217	10.2
Attempts to Rape	9	5	-44.4
Robbery	102	85	-16.7
Firearm	21	12	-42.9
Knife or Cutting Instrument	17	5	-70.6
Other Dangerous Weapon	26	23	-11.5
Strong Arm – No Weapon	38	45	18.4
Aggravated Assault	795	847	6.5
Firearm	10	19	90.0
Knife or Cutting Instrument	78	88	12.8
Other Dangerous Weapon	165	205	24.2
Hands, Fists, Feet, Etc.	542	535	-1.3
Violent Crime Subtotal	1,118	1,165	4.2
Burglary	2,180	1,826	-16.2
Forcible Entry	1,041	875	-15.9
Unlawful Entry – No Force	963	832	-13.6
Attempted Forcible Entry	176	119	-32.4
Larceny/Theft	8,699	8,673	-0.3
Motor Vehicle Theft	825	763	-7.5
Autos	668	590	-11.7
Trucks and Buses	55	46	-16.4
Other Vehicles	102	127	24.5
Property Crime Subtotal	11,704	11,262	-3.8
Crime Index Offense Total	12,822	12,427	-3.1

Crime Index Offenses, 2001-2010

Crime Index Offense	2001	2002	2003	2004	2005	2006	2007	2008	2009	2010
Murder/Non-Neg. Mansl.	9	6	12	10	14	9	17	4	15	11
Forcible Rape	159	167	143	181	179	195	202	222	206	222
Robbery	71	71	55	49	53	72	68	71	102	85
Aggravated Assault	275	309	289	343	444	532	599	738	795	847
Burglary	2027	2250	1814	1953	1966	2302	2096	2035	2180	1826
Larceny/Theft	10870	11399	9700	8984	9293	9012	8672	8926	8699	8673
Motor Vehicle Theft	1000	1037	1002	892	1030	977	878	854	825	763
Crime Index Offense Total	14411	15239	13015	12412	12979	13099	12532	12850	12822	12427

Crime Index Offense Totals, 2001-2010



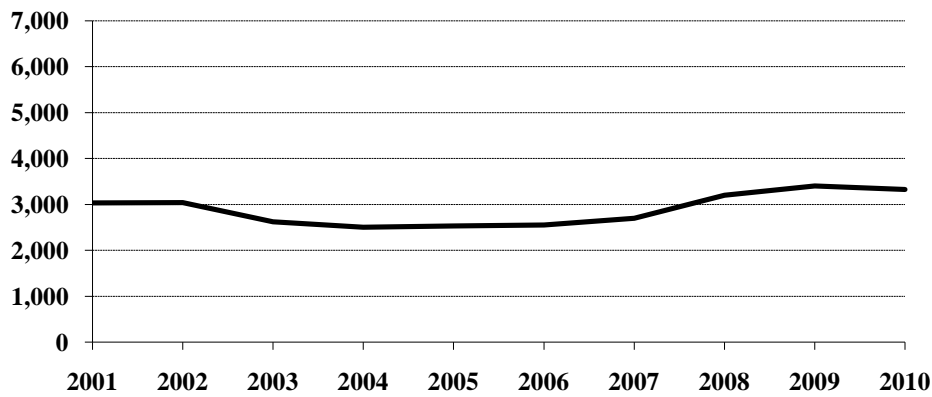
Crime Index Offense Summary

Year	Population	Crime Index Offense Total	% Change in Number from Previous Year	Crime Rate per 100,000 Population	% Change in Rate from Previous Year	Percent Cleared
2001	634,450	14,411	1.8%	2271.4	3.1%	21.6%
2002	634,110	15,239	5.7	2403.2	5.8	21.1
2003	634,000	13,015	-14.6	2052.8	-14.6	20.8
2004	634,500	12,412	-4.6	1956.2	-4.7	20.7
2005	637,000	12,979	4.6	2037.5	4.2	20.2
2006	636,000	13,099	0.9	2059.6	1.1	21.0
2007	640,000	12,532	-4.3	1958.1	-4.9	22.2
2008	641,500	12,850	2.5	2003.1	2.3	26.1
2009	647,000	12,822	-0.2	1981.8	-1.1	27.5
2010	672,591	12,427	-3.1	1847.6	-6.8	28.9

Arrests for Crime Index Offenses, 2001-2010

Year	Juvenile	Adult	Age Not Reported	Total
2001	1,479	1,551	4	3,034
2002	1,505	1,526	10	3,041
2003	1,187	1,432	1	2,620
2004	1,009	1,491	5	2,505
2005	1,009	1,524	1	2,534
2006	960	1,588	2	2,550
2007	1,090	1,610	0	2,700
2008	1,227	1,973	4	3,204
2009	1,219	2,178	3	3,400
2010	1,084	2,242	0	3,326

Arrests for Crime Index Offenses, 2001-2010



Property Loss Due to Crime Index Offenses, 2001-2010

Year	Population	Total Property Loss	% Change from Previous Year	Property Loss per Capita	Percent Recovered
2001	634,450	\$11,420,051	10.8%	\$18.00	33.2%
2002	634,110	12,457,277	9.1	19.65	30.6
2003	634,000	11,457,228	-8.0	18.07	31.5
2004	634,500	11,397,856	-0.5	17.96	35.7
2005	637,000	12,390,920	8.7	19.45	37.7
2006	636,000	12,446,104	0.4	19.57	30.6
2007	640,000	10,730,659	-13.8	16.77	36.9
2008	641,500	12,142,441	13.2	18.93	37.6
2009	647,000	11,700,881	-3.6	18.08	30.9
2010	672,591	11,968,019	2.3	17.18	28.2

Violent Crime

Violent crime includes the offenses of murder/non-negligent manslaughter, forcible rape, robbery, and aggravated assault. (See the UCR offense definitions section beginning on page 58 of this publication for definitions of these and other offenses.)

In 2010, 1,165 violent crimes were reported in North Dakota. This is a 4.2 percent increase from the 2009 total of 1,118 violent offenses reported. In 2008, 1,035 violent crimes were reported.

Violent crime comprised 9.4 percent of reported crime index offenses in North Dakota in 2010.

The violent crime rate for 2010 is 173.2 per 100,000, as compared to 172.8 per 100,000 in 2009. This is a 0.2 percent increase in the violent crime rate. In 2008, the violent crime rate was 161.3 per 100,000 population.

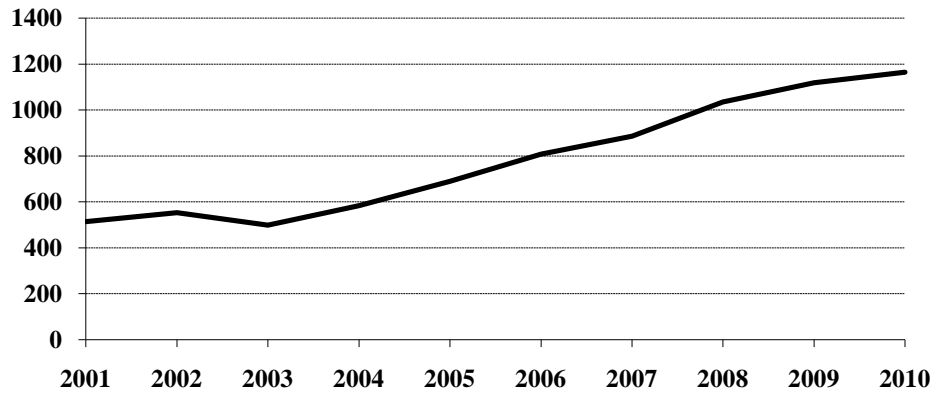
More than 54 percent of violent crimes in 2010 were reported as cleared by arrest or exceptional means.

Of the 437 total arrests reported for violent crimes, 14.0 percent were arrests of juveniles.

Violent Crime Summary

Year	Population	Violent Index Offenses	% Change in Number from Previous Year	Rate per 100,000 Population	% Change in Rate from Previous Year	Percent Cleared
2001	634,450	514	-8.5%	81.0	-7.4%	49.4%
2002	634,110	553	7.6	87.2	7.7	50.5
2003	634,000	499	-9.8	78.7	-9.7	57.3
2004	634,500	583	16.8	91.9	16.8	52.1
2005	637,000	690	18.4	108.3	17.8	51.4
2006	636,000	808	17.1	127.0	17.3	47.9
2007	640,000	886	9.7	138.4	9.0	44.6
2008	641,500	1,035	16.8	161.3	16.5	52.8
2009	647,000	1,118	8.0	172.8	7.1	52.4
2010	672,591	1,165	4.2	173.2	0.2	54.8

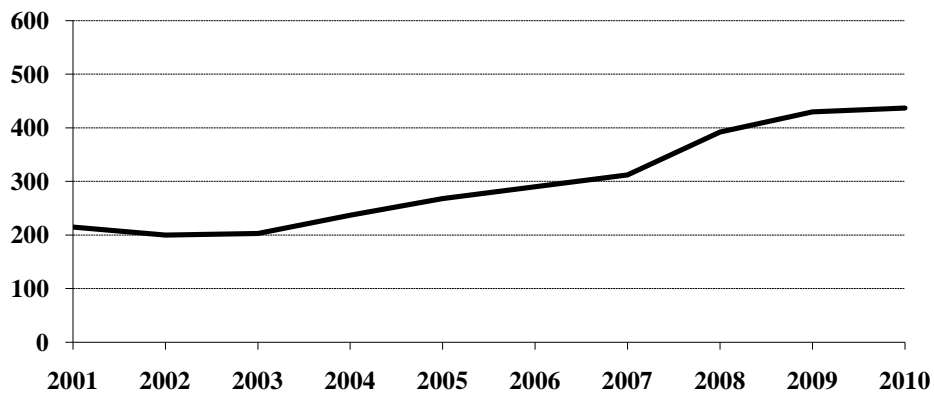
Violent Crime Totals, 2001-2010



Arrests for Violent Crimes, 2001-2010

Year	Juvenile	Adult	Age Not Reported	Total
2001	40	175		215
2002	46	154		200
2003	31	172		203
2004	40	197		237
2005	57	211		268
2006	41	249		290
2007	46	266		312
2008	69	320	3	392
2009	45	385		430
2010	61	376		437

Arrests for Violent Crimes, 2001-2010



Murder/Non-Negligent Manslaughter

The UCR program defines Murder/Non-Negligent Manslaughter as the “willful killing of one human being by another.” Not included in this category are attempts to murder, assaults to murder, suicides, accidental deaths, justifiable homicides, and deaths caused by gross negligence.

Eleven murder/non-negligent manslaughter deaths were known to the North Dakota UCR program in 2010.

Ten of the eleven victims were adults. “Adult” is defined as a person aged 18 years or older.

Seven of the victims were male.

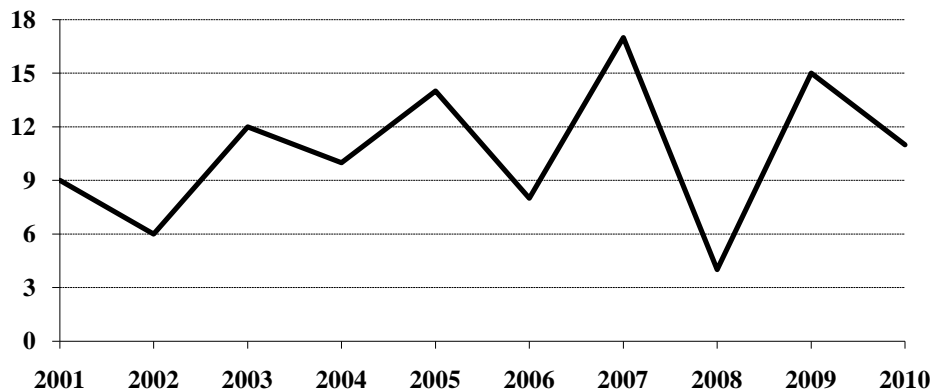
Firearms were involved in the deaths of six homicide victims. In 2 homicides, the weapon involved was personal weapons. (See the summary of homicide incidents and the weapons involved on page 10.)

The Office of Attorney General publishes a detailed report titled Homicide in North Dakota. The report provides an analysis of homicides for the period 1991-2010 and is available on our website at www.ag.nd.gov, under the News and Publications link.

Murder/Non-Negligent Manslaughter Summary

Year	Population	Offense Total	% Change in Number from Previous Year	Rate per 100,000 Population	% Change in Rate from Previous Year	Percent Cleared
2001	634,450	9	12.5%	1.4	16.7%	88.9%
2002	634,110	6	-33.3	0.9	-35.7	83.3
2003	634,000	12	100.0	1.9	111.1	100.0
2004	634,500	10	-16.7	1.6	-15.8	100.0
2005	637,000	14	40.0	2.2	37.5	78.6
2006	636,000	8	-42.9	1.3	-40.9	88.9
2007	640,000	17	112.5	2.7	107.7	94.1
2008	641,500	4	-76.5	0.6	-77.8	100.0
2009	647,000	15	275.0	2.3	283.3	93.3
2010	672,591	11	-26.7	1.6	-30.4	100.0

Murder/Non-Negligent Manslaughter Totals, 2001-2010



Summary of Murder/Non-Negligent Manslaughter Incidents, 2010

Date & Location of Incident	Victim(s)		Assailant(s)		Weapons Used	Relationship of Victim to Assailant	Circumstances
	Age	Sex	Age	Sex			
2/28/2010 Ward County	44	F	39	M	Strangulation	Ex-Spouse	Argument Domestic Violence
2/28/2010 McIntosh County	30	M	27	M	Personal Weapon	Acquaintances	Argument
3/12/2010 Bismarck	30	F	27	M	Personal Weapon	Wife	Argument Domestic Violence
3/18/2010 Richland County	58	M	46	M	Shotgun	Acquaintances	Argument
4/2/2010 Dickinson	64	F	65	M	Shotgun	Wife	Domestic Violence Murder/Suicide
6/23/2010 Grand Forks County	59	M	45	M	Blunt Object	Brother	Argument Domestic Violence
7/17/2010 Minot	20	M	24	M	Handgun	Acquaintances	Argument
10/2/2010 Mandan	22	M	25	M	Handgun	Stranger	Argument
10/17/2010 Pembina County	19	M	25	M	Rifle	Acquaintances	Argument
10/18/2010 Williston	16	F	18	M	Firearm	Former Girlfriend	Domestic Violence Murder/Suicide
12/30/2010 Standing Rock Reservation	23	M	26	F	Knife	Boyfriend	Argument Domestic Violence

Forcible Rape

The UCR program defines Forcible Rape as “the carnal knowledge of a female forcibly and against her will.” Assaults to rape, attempts to commit rape by force or threat of force are included. Carnal abuse, statutory offenses (no force -- victim under age of consent), and other sex offenses are not included.

In 2010, 222 forcible rapes were reported to local law enforcement in North Dakota. This is an increase of 7.8 percent from the 2009 total of 206 offenses. A total of 222 forcible rapes was also reported in 2008.

Because the UCR definition states that victims of rape must be female, the rate of occurrence for reported rapes is calculated based only on the female population. The Census Bureau estimate of North Dakota’s population for 2010 is 672,591. The number of females is approximately half of that figure. The resulting rate for 2010 is 66.0 reported rapes per 100,000 females, compared with 63.7 rapes per 100,000 females in 2009. In 2008, the forcible rape rate was 69.2 per 100,000 females.

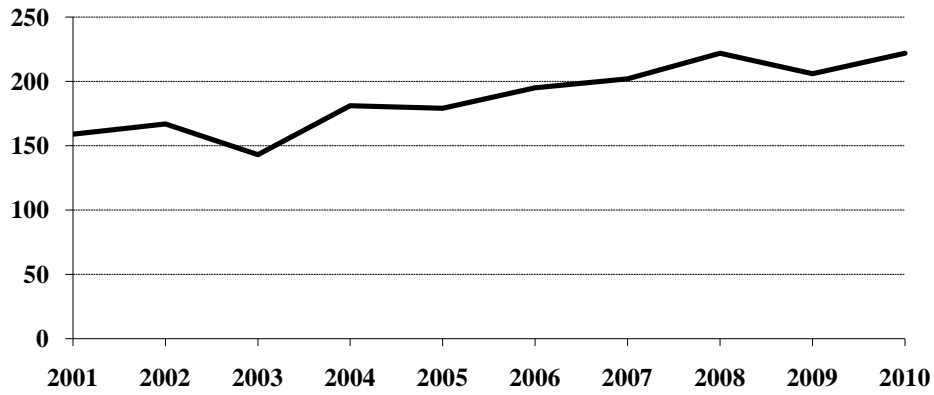
In 2010, 33.8 percent of reported rapes were cleared by arrest or exceptional means.

Forty-three arrests for forcible rape were reported in 2010. More than 60.5 percent of those arrested were adults. In 2009, 26 arrests for rape were reported.

Forcible Rape Summary

Year	Population	Offense Total	% Change in Number from Previous Year	Rate per 100,000 Females	% Change in Rate from Previous Year	Percent Cleared
2001	634,450	159	-8.1%	50.1	-7.1%	42.1%
2002	634,110	167	5.0	52.7	5.2	37.7
2003	634,000	143	-14.4	45.1	-14.4	51.7
2004	634,500	181	26.6	57.1	26.6	40.3
2005	637,000	179	-1.1	56.2	-1.6	35.8
2006	636,000	195	8.9	61.3	9.1	31.8
2007	640,000	202	3.6	63.1	2.9	28.7
2008	641,500	222	9.9	69.2	9.7	29.7
2009	647,000	206	-7.2	63.7	-7.9	29.1
2010	672,591	222	7.8	66.0	3.6	34.2

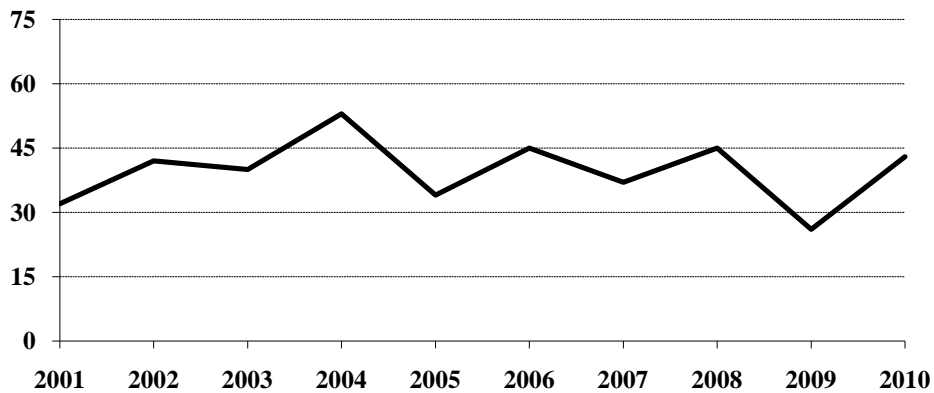
Forcible Rape Totals, 2001-2010



Arrests for Forcible Rape, 2001-2010

Year	Juvenile	Adult	Total
2001	9	23	32
2002	18	24	42
2003	11	29	40
2004	10	43	53
2005	6	28	34
2006	4	41	45
2007	8	29	37
2008	18	27	45
2009	8	18	26
2010	17	26	43

Arrests for Forcible Rape, 2001-2010



Robbery

Robbery is defined by the UCR program as “the taking or attempting to take anything of value from the care, custody, or control of a person or persons by force or threat of force or violence and/or by putting the victim in fear.”

In 2010, there were 85 robberies reported in North Dakota. This is a decrease of 16.7 percent from the total of 102 reported in 2009. A total of 71 robberies was reported in 2008.

The robbery rate for 2010 was 12.6 per 100,000 population, as compared with 15.8 per 100,000 population in 2009. This is a 20.3 percent decrease in the robbery rate.

More than 35 percent of reported robberies were cleared by arrest or exceptional means.

Thirty-two arrests for robbery were reported in 2010. Twenty-seven of those arrested were adults.

Firearms were used in 12 of the reported robberies in 2010.

Nearly 53 percent were strong-arm robberies where no weapon was used.

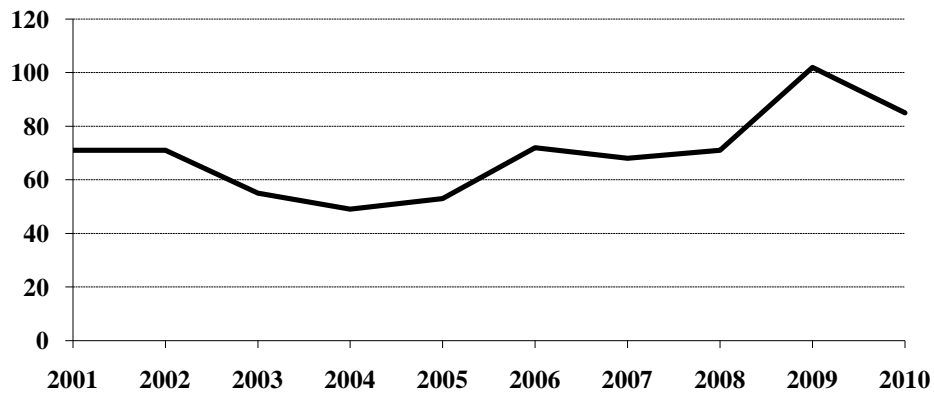
The value of property stolen in robbery incidents decreased from \$141,456 in 2009 to \$27,073 in 2010.

The average robbery in 2010 involved \$319 worth of property.

Robbery Summary

Year	Population	Offense Total	% Change in Number from Previous Year	Rate per 100,000 Population	% Change in Rate from Previous Year	Percent Cleared
2001	634,450	71	14.5%	11.2	15.5%	23.9%
2002	634,110	71	0.0	11.2	0.0	45.1
2003	634,000	55	-22.5	8.7	-22.3	43.6
2004	634,500	49	-10.9	7.7	-11.5	26.5
2005	637,000	53	8.2	8.3	7.8	34.0
2006	636,000	72	35.8	11.3	36.1	36.1
2007	640,000	68	-5.6	10.6	-6.2	30.9
2008	641,500	71	4.4	11.1	4.7	28.2
2009	647,000	102	43.7	15.8	42.3	36.3
2010	672,591	85	-16.7	12.6	-20.3	35.3

Robbery Totals, 2001-2010



Robbery by Type of Weapon Involved, 2010

Type of Weapon	Number Reported	Percent of Total Offenses
Firearm	12	14.1%
Knife or Cutting Instrument	5	5.9
Other Dangerous Weapon	23	27.1
Hands, Fists, Feet, etc.	45	52.9
Robbery Total	85	100.0

Robbery by Place of Occurrence and Value of Property, 2010

Place of Occurrence	Number Reported	Value of Property	Average Value per Robbery
Highway	19	\$5,579	\$293.63
Commercial House	19	5,717	300.89
Gas or Service Station	3	401	133.67
Convenience Store	4	1,158	289.50
Residence	16	10,194	637.13
Bank			
Other	24	4,024	167.67
Robbery Total	85	27,073	318.51

Arrests for Robbery, 2001-2010

Year	Juvenile	Adult	Total
2001	3	16	19
2002	9	16	25
2003	6	19	25
2004	8	7	15
2005	4	18	22
2006	7	18	25
2007	5	24	29
2008	4	19	23
2009	3	34	37
2010	5	27	32

Property Loss Due to Robbery, 2001-2010

Year	Offense Total	Property Loss	Average Loss per Robbery
2001	71	\$45,051	\$634.52
2002	71	24,711	348.04
2003	55	50,180	912.36
2004	49	19,915	406.43
2005	53	16,608	313.36
2006	72	62,319	865.54
2007	68	80,292	1,180.76
2008	71	66,036	930.08
2009	102	141,456	1,386.82
2010	85	27,073	318.51

Aggravated Assault

The UCR program defines Aggravated Assault as “an unlawful attack by one person upon another for the purpose of inflicting severe or aggravated bodily injury. This type of assault is usually accompanied by the use of a weapon or by means likely to produce death or great bodily harm. Attempts are included because it is not necessary that an injury result when a gun, knife, or other weapon is used which could and probably would result in serious personal injury if the crime were successfully completed.”

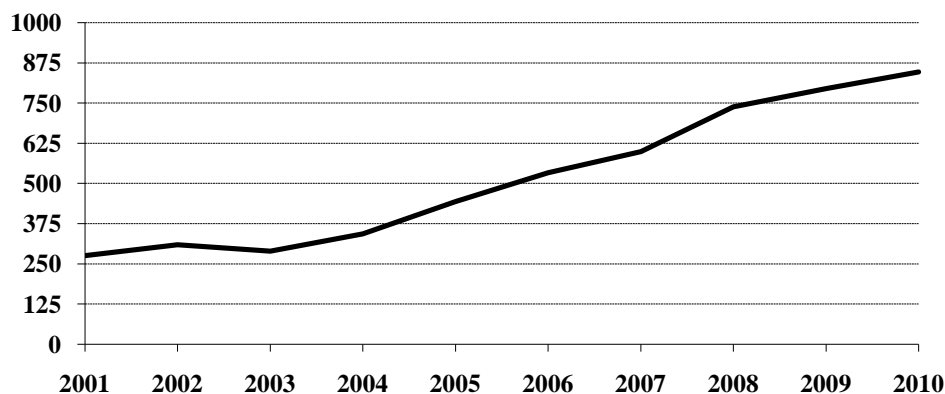
In 2010, 847 aggravated assaults were reported in North Dakota, an increase of 6.5 percent from the 795 aggravated assaults reported in 2009. In 2008, 738 aggravated assaults were reported.

The aggravated assault rate for North Dakota increased 2.4 percent from 122.9 per 100,000 population in 2009 to 125.9 per 100,000 population in 2010.

Aggravated Assault Summary

Year	Population	Offense Total	% Change in Number from Previous Year	Rate per 100,000 Population	% Change in Rate from Previous Year	Percent Cleared
2001	634,450	275	-13.8%	43.3	-12.9%	60.0%
2002	634,110	309	12.4	48.7	12.5	57.9
2003	634,000	289	-6.5	45.6	-6.4	60.9
2004	634,500	343	18.7	54.1	18.6	60.6
2005	637,000	444	29.4	69.7	28.8	59.0
2006	636,000	533	20.0	83.8	20.2	54.8
2007	640,000	599	12.4	93.6	11.7	50.3
2008	641,500	738	23.2	115.0	22.9	61.8
2009	647,000	795	7.7	122.9	6.9	59.7
2010	672,591	847	6.5	125.9	2.4	61.5

Aggravated Assault Totals, 2001-2010



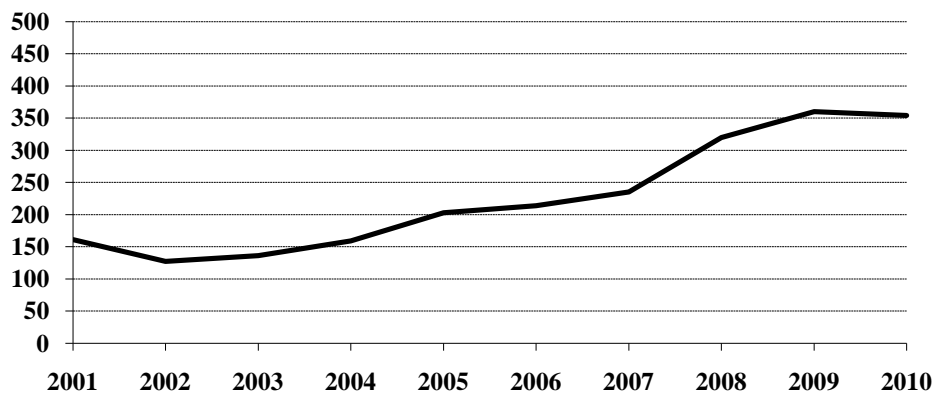
Aggravated Assault by Type of Weapon Involved, 2010

Type of Weapon	Number Reported	Percent of Total Offenses
Firearm	19	2.2%
Knife or Cutting Instrument	88	10.4
Other Dangerous Weapon	205	24.2
Hands, Fists, Feet, etc.	535	63.2
Aggravated Assault Total	847	100.0

Arrests for Aggravated Assault, 2001-2010

Year	Juvenile	Adult	Age Not Reported	Total
2001	28	133		161
2002	19	108		127
2003	14	122		136
2004	22	137		159
2005	47	156		203
2006	30	184		214
2007	31	204		235
2008	47	270	3	320
2009	34	326		360
2010	39	315		354

Arrests for Aggravated Assault, 2001-2010



Property Crime

Property crime includes the offenses of burglary, larceny/theft, and motor vehicle theft.

In 2010, the total number of property crimes reported was 11,262. This is a decrease of 3.8 percent from the 2009 total of 11,704.

Property crime accounted for 90.6 percent of the index offenses reported in North Dakota.

The property crime rate decreased 7.4 percent from 1809.0 per 100,000 population in 2009, to 1674.4 per 100,000 in 2010.

More than 26 percent of property crimes were cleared by arrest or exceptional means in 2010.

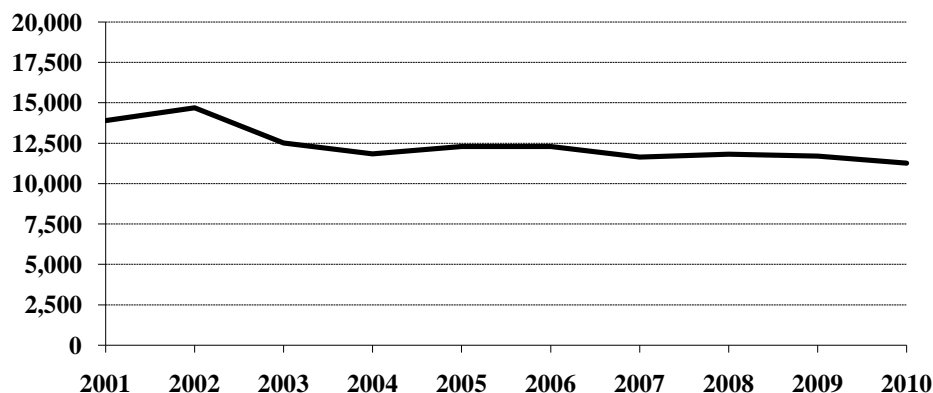
A total of 2,889 arrests were reported for property crimes. Of those, 35.4 percent were arrests of juveniles.

Property Crime Summary

Year	Population	Property Index Offenses	% Change in Number from Previous Year	Rate per 100,000 Population	% Change in Rate from Previous Year	Percent Cleared
2001	634,450	13,897	2.3%	2190.4	3.5%	20.6%
2002	634,110	14,686	5.7	2316.0	5.7	20.0
2003	634,000	12,516	-14.8	1974.1	-14.8	19.4
2004	634,500	11,830	-5.5	1864.5	-5.6	19.2
2005	637,000	12,289	3.9	1929.2	3.5	18.5
2006	636,000	12,291	*	1932.5	0.2	19.3
2007	640,000	11,646	-5.2	1819.7	-5.8	20.5
2008	641,500	11,815	1.5	1841.8	1.2	23.8
2009	647,000	11,704	-0.9	1809.0	-1.8	25.1
2010	672,591	11,262	-3.8	1674.4	-7.4	26.2

* Less than 0.1 percent.

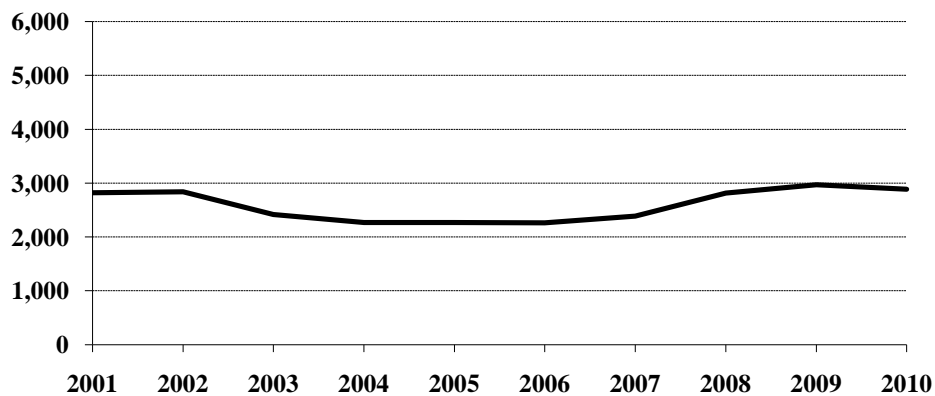
Property Crime Totals, 2001-2010



Arrests for Property Crimes, 2001-2010

Year	Juvenile	Adult	Age Not Reported	Total
2001	1,439	1,376	4	2,819
2002	1,459	1,372	10	2,841
2003	1,156	1,260	1	2,417
2004	969	1,294	5	2,268
2005	952	1,313	1	2,266
2006	919	1,339	2	2,260
2007	1,044	1,344		2,388
2008	1,158	1,653	1	2,812
2009	1,174	1,793	3	2,970
2010	1,023	1,866		2,889

Arrests for Property Crimes, 2001-2010



Burglary

The UCR program defines Burglary as the “unlawful entry of a structure to commit a felony or theft. The use of force to gain entry is not required to classify an offense as burglary.” Burglaries are classified into three categories: forcible entry, unlawful entry where no force is used, and attempted forcible entry.

In 2010, 1,826 burglaries were reported to the UCR program. This represents a decrease of 16.2 percent from the total of 2,180 burglaries reported in 2009.

The rate of burglaries based on population was 271.5 per 100,000 inhabitants for 2010. This is a 19.4 percent decrease from the rate of 336.9 per 100,000 population in 2009.

More than 14 percent of burglaries were cleared by arrest or exceptional means in 2010.

A total of 247 arrests for burglary was reported in 2010. Of these, 28.7 percent were juveniles.

The UCR program classifies burglaries by location of the incident. More than 53 percent were burglaries of residences.

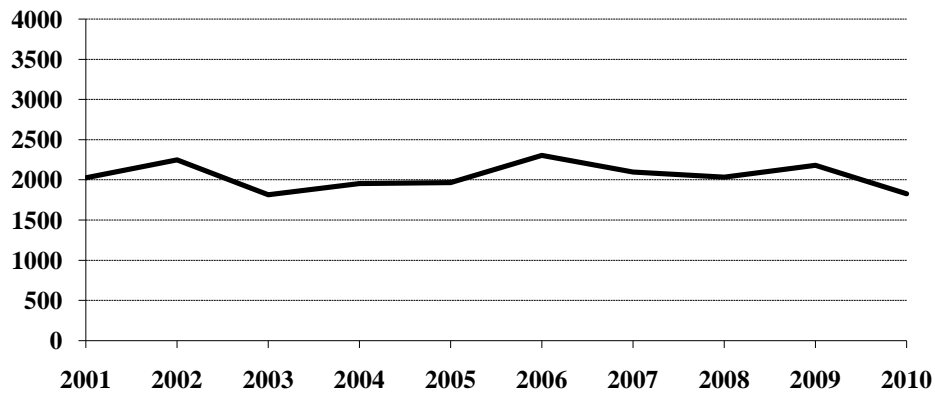
Nearly 48 percent of burglaries involved forcible entry.

Property loss due to burglary is substantial. More than \$2.1 million dollars worth of property was reported stolen in burglary incidents in 2010. The average burglary involved \$1,173 worth of property.

Burglary Summary

Year	Population	Offense Total	% Change in Number from Previous Year	Rate per 100,000 Population	% Change in Rate from Previous Year	Percent Cleared
2001	634,450	2,027	1.1%	319.5	2.4%	15.1%
2002	634,110	2,250	11.0	354.8	11.0	14.0
2003	634,000	1,814	-19.4	286.1	-19.4	13.8
2004	634,500	1,954	7.7	308.0	7.7	11.2
2005	637,000	1,966	0.6	308.6	0.2	11.6
2006	636,000	2,302	17.1	361.9	17.3	15.2
2007	640,000	2,096	-8.9	327.5	-9.5	12.3
2008	641,500	2,035	-2.9	317.2	-3.1	16.1
2009	647,000	2,180	7.1	336.9	6.2	15.2
2010	672,591	1,826	-16.2	271.5	-19.4	14.6

Burglary Totals, 2001-2010



Burglary by Type of Entry, 2010

Type of Entry	Number Reported	Percent of Total Offenses
Forcible Entry	875	47.9%
Unlawful Entry - No Force	832	45.6
Attempted Forcible Entry	119	6.5
Burglary Total	1,826	100.0

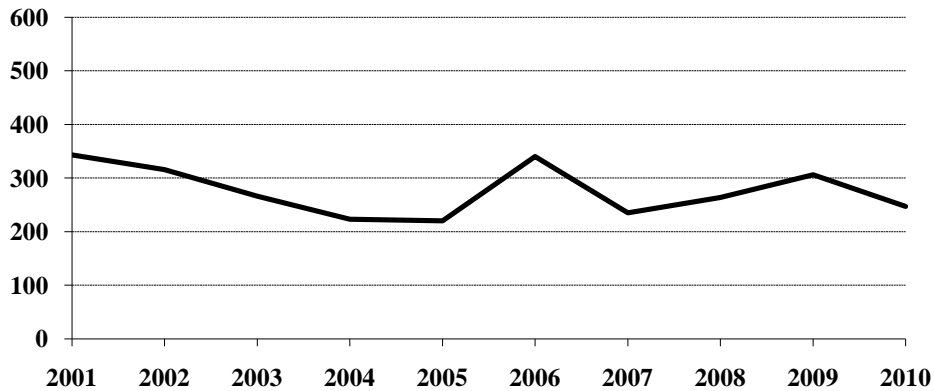
Burglary by Location and Value of Property, 2010

Location	Number Reported	Value of Property	Average Value per Burglary
Residence	971	\$1,152,393	\$1,186.81
Non-Residence	855	989,427	1,157.22
Burglary Total	1,826	2,141,820	1,172.96

Arrests for Burglary, 2001-2010

Year	Juvenile	Adult	Age Not Reported	Total
2001	175	166	2	343
2002	166	144	6	316
2003	118	148		266
2004	99	119	5	223
2005	55	165		220
2006	115	224	1	340
2007	94	141		235
2008	97	167		264
2009	94	211	1	306
2010	71	176		247

Arrests for Burglary, 2001-2010



Property Loss Due to Burglary, 2001-2010

Year	Offense Total	Property Loss	Average Loss per Burglary
2001	2,027	\$1,572,709	\$775.88
2002	2,250	2,082,601	925.60
2003	1,814	1,562,749	861.49
2004	1,954	2,207,247	1,129.60
2005	1,966	2,057,935	1,046.76
2006	2,302	2,432,305	1,056.61
2007	2,096	1,943,995	927.48
2008	2,035	3,420,351	1,680.76
2009	2,180	2,509,507	1,151.15
2010	1,826	2,141,820	1,172.96

Larceny/Theft

The UCR program defines Larceny/Theft as the “unlawful taking, carrying, leading, or riding away of property from the possession or constructive possession of another. It includes crimes such as shoplifting, pocket-picking, purse-snatching, thefts from motor vehicles, thefts of motor vehicle parts and accessories, bicycle thefts, etc., in which no use of force, violence or fraud occurs. In the Uniform Crime Reporting program, this crime category does not include embezzlement, confidence games, forgery, and worthless checks. Motor vehicle theft is also excluded from this category inasmuch as it is a separate crime index offense.”

A total of 8,673 larceny/theft offenses was reported in North Dakota in 2010. This is a 0.3 percent decrease from the 2009 total of 8,699.

The larceny/theft rate per 100,000 population was 1289.5 compared with 1344.5 in 2009, a 4.1 percent decrease in the rate.

More than 28 percent of larceny/theft offenses were cleared by arrest or exceptional means in 2010.

The number of arrests for this offense increased slightly from 2,485 in 2009 to 2,487 in 2010. Nearly 36 percent of those arrested for larceny/theft in 2010 were juveniles.

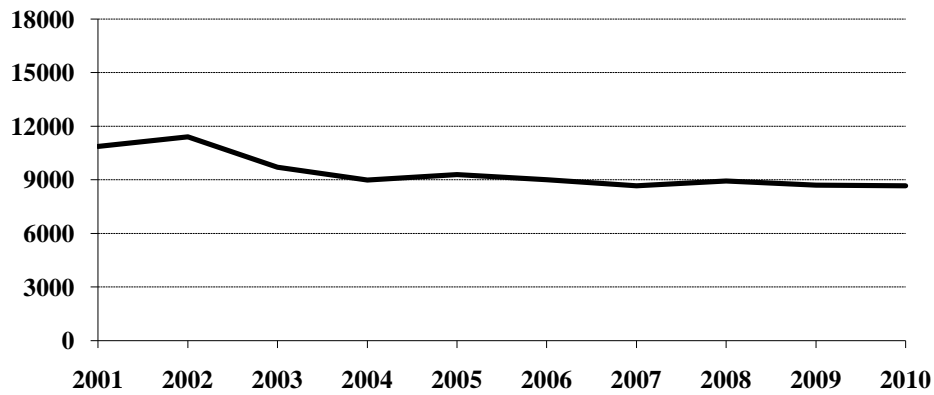
More than \$5.8 million dollars worth of property was reported stolen as the result of larceny/theft offenses in the state. The average dollar value per offense is \$670.

Larceny/theft accounted for 69.8 percent of the total index offenses reported and amounted to 48.5 percent of the total value of stolen property.

Larceny/Theft Summary

Year	Population	Offense Total	% Change in Number from Previous Year	Rate per 100,000 Population	% Change in Rate from Previous Year	Percent Cleared
2001	634,450	10,870	2.1	1713.3	3.4	20.9
2002	634,110	11,399	4.9	1797.6	4.9	20.4
2003	634,000	9,700	-14.9	1530.0	-14.9	19.8
2004	634,500	8,984	-7.4	1415.9	-7.5	20.6
2005	637,000	9,293	3.4	1458.9	3.0	19.3
2006	636,000	9,012	-3.0	1417.0	-2.9	19.8
2007	640,000	8,672	-3.8	1355.0	-4.4	22.1
2008	641,500	8,926	2.9	1391.4	2.7	25.5
2009	647,000	8,699	-2.5	1344.5	-3.4	27.4
2010	672,591	8,673	-0.3	1289.5	-4.1	28.6

Larceny/Theft Totals, 2001-2010



Monetary Value of Larceny/Theft, 2010

Value of Larceny/Theft	Number Reported	Percent of Total Offenses
Under \$50	3,437	39.6%
\$50 to \$200	2,406	27.8
Over \$200	2,830	32.6
Larceny/Theft Total	8,673	100.0

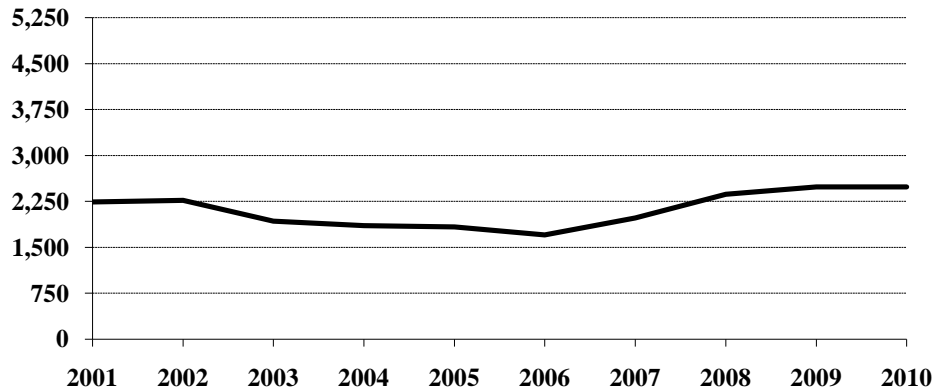
Larceny/Theft by Type and Value, 2010

Type of Larceny/Theft	Number Reported	Value of Property	Average Value per Larceny/Theft
From Motor Vehicle	10	\$969	\$96.90
Shoplifting	13	13,513	1,039.46
From Building	1,876	209,333	111.58
Bicycles	1,863	826,782	443.79
Motor Vehicle Parts, Accessories	354	186,993	528.23
From Coin-Operated Machine	578	135,014	233.59
Pocket Picking	1,070	2,189,298	2,046.07
Purse Snatching	8	2,950	368.75
All Other	2,901	2,245,089	773.90
Larceny/Theft Total	8,673	5,809,941	669.89

Arrests for Larceny/Theft, 2001-2010

Year	Juvenile	Adult	Age Not Reported	Total
2001	1,134	1,102	2	2,238
2002	1,147	1,114	3	2,264
2003	919	1,004	1	1,924
2004	792	1,064		1,856
2005	794	1,035	1	1,830
2006	699	1,000	1	1,700
2007	876	1,103		1,979
2008	977	1,388	1	2,366
2009	992	1,491	2	2,485
2010	895	1,592		2,487

Arrests for Larceny/Theft, 2001-2010



Property Loss Due to Larceny/Theft, 2001-2010

Year	Offense Total	Property Loss	Average Loss per Larceny/Theft
2001	10,870	\$5,432,250	\$499.75
2002	11,399	5,701,494	500.17
2003	9,700	5,207,256	536.83
2004	8,984	4,931,853	548.96
2005	9,293	5,191,397	558.64
2006	9,012	5,425,420	602.02
2007	8,672	4,343,221	500.83
2008	8,926	4,757,988	533.05
2009	8,699	5,374,262	617.80
2010	8,673	5,809,941	669.89

Motor Vehicle Theft

Motor Vehicle Theft is defined by the UCR program as “the theft or attempted theft of a motor vehicle; the offense category includes the stealing of automobiles, trucks, buses, motorcycles, motor scooters, snowmobiles, etc. The definition excludes the taking of a motor vehicle for temporary use by those persons having lawful access.”

A total of 763 motor vehicle thefts was reported in 2010. This is a decrease of 7.5 percent from the 2009 total of 825.

Based on a Census Bureau population estimate of 672,591 for North Dakota, the resulting motor vehicle theft rate is 113.4 per 100,000 population.

More than 26 percent of reported motor vehicle thefts were cleared by arrest or exceptional means in 2010.

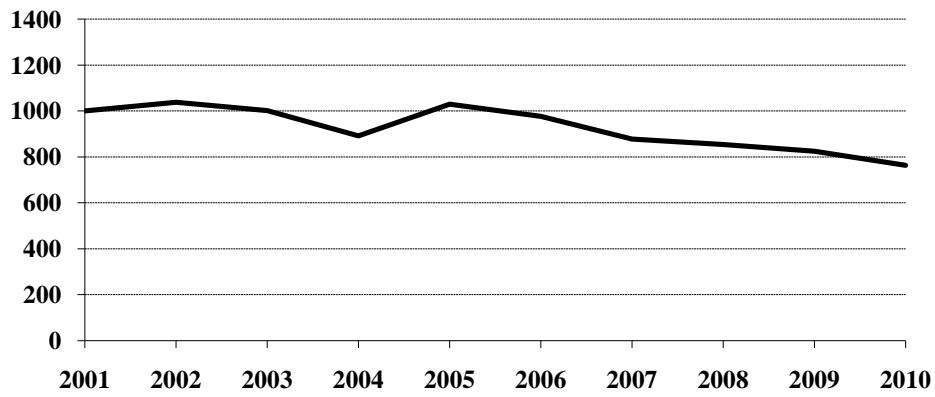
The number of arrests for motor vehicle theft decreased from 179 in 2009 to 155 in 2010.

The average value per motor vehicle theft was approximately \$5226.

Motor Vehicle Theft Summary

Year	Population	Offense Total	% Change in Number from Previous Year	Rate per 100,000 Population	% Change in Rate from Previous Year	Percent Cleared
2001	634,450	1,000	6.2%	157.6	7.4%	27.8%
2002	634,110	1,037	3.7	163.5	3.7	29.0
2003	634,000	1,002	-3.4	158.0	-3.4	25.2
2004	634,500	892	-11.0	140.6	-11.0	22.2
2005	637,000	1,030	15.5	161.7	15.0	23.5
2006	636,000	977	-5.1	153.6	-5.0	23.7
2007	640,000	878	-10.1	137.2	-10.7	24.4
2008	641,500	854	-2.7	133.1	-3.0	24.6
2009	647,000	825	-3.4	127.5	-4.2	27.4
2010	672,591	763	-7.5	113.4	-11.1	26.7

Motor Vehicle Theft Totals, 2001-2010



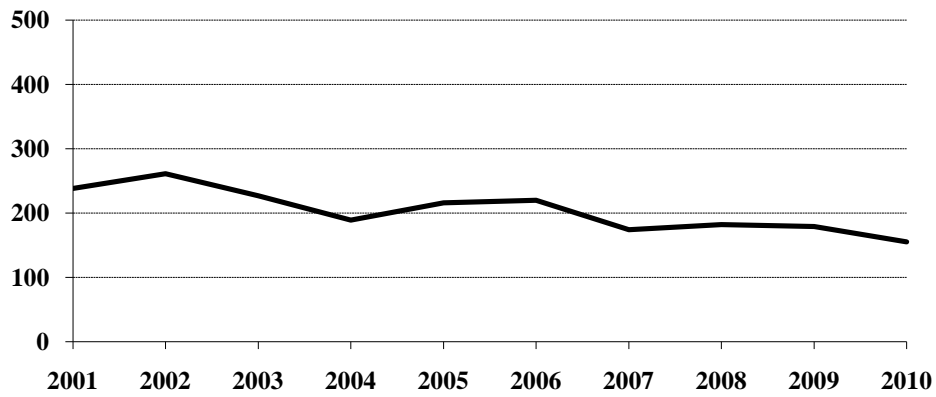
Type of Vehicle Stolen, 2010

Type of Vehicle	Number Reported	Percent of Total Offenses
Automobiles	590	77.3%
Trucks and Buses	46	6.0
Other Vehicles	127	16.7
Motor Vehicle Theft Total	763	100.0

Arrests for Motor Vehicle Theft, 2001-2010

Year	Juvenile	Adult	Age Not Reported	Total
2001	130	108		238
2002	146	114	1	261
2003	119	108		227
2004	78	111		189
2005	103	113		216
2006	105	115		220
2007	74	100		174
2008	84	98		182
2009	88	91		179
2010	57	98		155

Arrests for Motor Vehicle Theft, 2001-2010



Property Loss Due to Motor Vehicle Theft, 2001-2010

Year	Offense Total	Property Loss	Average Loss per Offense
2001	1,000	\$4,414,621	\$4,414.62
2002	1,037	4,647,821	4,481.99
2003	1,002	4,637,043	4,627.79
2004	892	4,238,662	4,751.86
2005	1,030	5,124,789	4,975.52
2006	977	4,525,628	4,632.17
2007	878	4,348,148	4,952.33
2008	854	3,897,971	4,564.37
2009	825	3,674,803	4,454.31
2010	763	3,987,385	5,225.93

Crime Index Offenses by Reporting Jurisdiction

The rate per 100,000 population is shown immediately below the actual number of crime index offenses reported by each jurisdiction. A county total is also shown for each of those counties that have more than one reporting jurisdiction within its geographic boundaries. The rate is reported per 100,000 for easy comparison to national publications.

Number and Rate of Index Offenses, 2010

County	Reporting Jurisdiction	Population	Murder/ Non-Negligent Manslaughter	Forcible Rape	Robbery	Aggravated Assault	Burglary	Larceny/ Theft	Motor Vehicle Theft	Total Index Offenses
Adams	County SO	2,289				1 43.7	5 218.4	5 218.4	1 43.7	12 524.2
Barnes	County SO	4,592					2 43.6	13 283.1	2 43.6	17 370.2
	Valley City PD	6,477		1 15.4		3 46.3	20 308.8	54 833.7	6 92.6	84 1296.9
	County Total	11,069		1 9.0		3 27.1	22 198.8	67 605.3	8 72.3	101 912.5
Benson	County SO	7,169		1 13.9		3 41.8	6 83.7	7 97.6	2 27.9	19 265.0
Billings	County SO	754					1 132.6	2 265.3		3 397.9
	Medora PD	99				1 1010.1				1 1010.1
	County Total	853				1 117.2	1 117.2	2 234.5		4 468.9
Bottineau	County SO	6,519					7 107.4	14 214.8	4 61.4	25 383.5
Bowman	County SO	1,561							1 64.1	1 64.1
	Bowman PD	1,563	DID NOT REPORT IN 2010							
	Scranton PD	N/A	DID NOT REPORT IN 2010							
Burke	County SO	1,621		1 61.7		2 123.4	4 246.8	16 987.0	3 185.1	26 1603.9
	Powers Lake PD	252	DID NOT REPORT IN 2010							
	County Total	1,873		1 53.4		2 106.8	4 213.6	16 854.2	3 160.2	26 1388.1
Burleigh	County SO	16,735		4 23.9		12 71.7	29 173.3	95 567.7	11 65.7	151 902.3
	Bismarck PD	64,142	1 1.6	27 42.1	17 26.5	165 257.2	190 296.2	1273 1984.7	87 135.6	1760 2743.9
	Lincoln PD	3,140						8 254.8	1 31.8	9 286.6
	County Total	84,017	1 1.2	31 36.9	17 20.2	177 210.7	219 260.7	1376 1637.8	99 117.8	1920 2285.3
Cass	County SO	24,936		4 16.0		13 52.1	75 300.8	100 401.0	15 60.2	207 830.1
	Fargo PD *	99,694		47 47.1	36 36.1	232 232.7	451 452.4	2357 2364.2	172 172.5	3295 3305.1
	West Fargo PD	26,409		7 26.5	3 11.4	28 106.0	106 401.4	320 1211.7	29 109.8	493 1866.8
	County Total	151,039		58 38.4	39 25.8	273 180.7	632 418.4	2777 1838.6	216 143.0	3995 2645.0
Cavalier	County SO	3,741					5 133.7	29 775.2	4 106.9	38 1015.8

* Includes 126 index offenses reported by NDSU PD

County	Reporting Jurisdiction	Population	Murder/ Non-Negligent Manslaughter	Forcible Rape	Robbery	Aggravated Assault	Burglary	Larceny/ Theft	Motor Vehicle Theft	Total Index Offenses
Dickey	County SO	2,067					1 48.4	6 290.3	1 48.4	8 387.0
	Oakes PD	1,797				1 55.6	4 222.6	9 500.8		14 779.1
	Ellendale PD	1,500				2 133.3		1 66.7		3 200.0
	County Total	5,364				3 55.9	5 93.2	16 298.3	1 18.6	25 466.1
Divide	County SO	1,053	DID NOT REPORT IN 2010							
	Crosby PD	954	DID NOT REPORT IN 2010							
Dunn	County SO	2,766	DID NOT REPORT IN 2010							
	Killdeer PD	704								0 0.0
Eddy	County SO	2,333					2 85.7	10 428.6		12 514.4
Emmons	County SO	2,414					5 207.1	23 952.8		28 1159.9
	Linton PD	1,031	DID NOT REPORT IN 2010							
Foster	County SO	1,337	DID NOT REPORT IN 2010							
	Carrington PD	2,001					1 50.0	1 50.0	2 100.0	4 199.9
Golden Valley	County SO	1,655					2 120.8	9 543.8		11 664.7
Grand Forks	County SO	11,853	1 8.4	1 8.4		1 8.4	17 143.4	38 320.6	11 92.8	69 582.1
	Emerado PD	497				1 201.2	1 201.2	5 1006.0	2 402.4	9 1810.9
	Grand Forks PD *	53,382		37 69.3	7 13.1	79 148.0	265 496.4	1250 2341.6	81 151.7	1719 3220.2
	Larimore PD	1,336				1 74.9	1 74.9			2 149.7
	Northwood PD	944				1 105.9	6 635.6	16 1694.9	1 105.9	24 2542.4
	Thompson PD	985					1 101.5			1 101.5
	County Total	68,997	1 1.4	38 55.1	7 10.1	83 120.3	291 421.8	1309 1897.2	95 137.7	1824 2643.6
Grant	County SO	1,844		1 54.2			3 162.7	5 271.1	2 108.5	11 596.5
	Elgin PD	536					1 186.6	1 186.6		2 373.1
	County Total	2,380		1 42.0			4 168.1	6 252.1	2 84.0	13 546.2
Griggs	County SO	2,399				1 41.7	1 41.7	4 166.7		6 250.1
Hettinger	County SO	2,399					2 83.4	5 208.4	1 41.7	8 333.5
Kidder	County SO	1,606						2 124.5		2 124.5
	Steele PD	632				1 158.2		1 158.2		2 316.5
	County Total	2,238				1 44.7		3 134.0		4 178.7
LaMoure	County SO	3,175		2 63.0			1 31.5			3 94.5
	Kulm PD	N/A	DID NOT REPORT IN 2010							
	LaMoure PD	807	DID NOT REPORT IN 2010							
Logan	County SO	1,217					1 82.2	7 575.2		8 657.4
	Napoleon PD	702					5 712.3	2 284.9		7 997.2
	County Total	1,919					6 312.7	9 469.0		15 781.7
McHenry	County SO	5,295					2 37.8	9 170.0	1 18.9	12 226.6

* Includes 159 index offenses reported by UND PD.

County	Reporting Jurisdiction	Population	Murder/ Non-Negligent Manslaughter	Forcible Rape	Robbery	Aggravated Assault	Burglary	Larceny/ Theft	Motor Vehicle Theft	Total Index Offenses
McIntosh	County SO	1,744	1 57.3				2 114.7	2 114.7	2 114.7	7 401.4
	Wishek PD	866	DID NOT REPORT IN 2010							
McKenzie	County SO	4,579						1 21.8		1 21.8
	Watford City PD	1,450				2 137.9	6 413.8	27 1862.1	7 482.8	42 2896.6
	County Total	6,029				2 33.2	6 99.5	28 464.4	7 116.1	43 713.2
McLean	County SO	8,535		3 35.1		3 35.1	43 503.8	66 773.3	1 11.7	116 1359.1
Mercer	County SO	2,865		3 104.7			12 418.8	14 488.7	7 244.3	36 1256.5
	Beulah PD	2,976				2 67.2	6 201.6	39 1310.5	1 33.6	48 1612.9
	Hazen PD	2,260	DID NOT REPORT IN 2010							
	Reporting Agency Total	8,101		3 37.0		2 24.7	18 222.2	53 654.2	8 98.8	84 1036.9
Morton	County SO	8,462		1 11.8			9 106.4	31 366.3	8 94.5	49 579.1
	Mandan PD	19,134		11 57.5	2 10.5	27 141.1	26 135.9	242 1264.8	18 94.1	326 1703.8
	County Total	27,596		12 43.5	2 7.2	27 97.8	35 126.8	273 989.3	26 94.2	375 1358.9
Mountrail	County SO	5,742					10 174.2	61 1062.3	5 87.1	76 1323.6
	Stanley PD	1,329							1 75.2	1 75.2
	County Total	7,071					10 141.4	61 862.7	6 84.9	77 1089.0
Nelson	County SO	3,195		1 31.3	1 31.3	2 62.6	6 187.8	37 1158.1	4 125.2	51 1596.2
Oliver	County SO	1,668					1 60.0			1 60.0
	Center PD	N/A	DID NOT REPORT IN 2010							
Pembina	County SO	6,212		2 32.2		1 16.1	2 32.2	8 128.8	6 96.6	19 305.9
	Cavalier PD	1,351				1 74.0	4 296.1	16 1184.3	2 148.0	23 1702.4
	County Total	7,563		2 26.4		2 26.4	6 79.3	24 317.3	8 105.8	42 555.3
Pierce	County SO	1,513						2 132.2		2 132.2
	Rugby PD	2,566					6 233.8	35 1364.0	2 77.9	43 1675.8
	County Total	4,079					6 147.1	37 907.1	2 49.0	45 1103.2
Ramsey	County SO	4,673		3 64.2		1 21.4	1 21.4	11 235.4	5 107.0	21 449.4
	Devils Lake PD	6,917		5 72.3		18 260.2	34 491.5	254 3672.1	20 289.1	331 4785.3
	County Total	11,590		8 69.0		19 163.9	35 302.0	265 2286.5	25 215.7	352 3037.1
Ransom	County SO	3,486		1 28.7			4 114.7	4 114.7	2 57.4	11 315.5
	Lisbon PD	2,185				5 228.8	19 869.6	20 915.3	3 137.3	47 2151.0
	County Total	5,671		1 17.6		5 88.2	23 405.6	24 423.2	5 88.2	58 1022.7
Renville	County SO	2,062					5 242.5	11 533.5	2 97.0	18 872.9
	Mohall PD	N/A	DID NOT REPORT IN 2010							
	Sherwood PD	216								0 0.0
	Reporting Agency Total	2,278					5 219.5	11 482.9	2 87.8	18 790.2

County	Reporting Jurisdiction	Population	Murder/ Non-Negligent Manslaughter	Forcible Rape	Robbery	Aggravated Assault	Burglary	Larceny/ Theft	Motor Vehicle Theft	Total Index Offenses
Richland	County SO	8,905				4 44.9	16 179.7	37 415.5	2 22.5	59 662.5
	Wahpeton PD *	7,592		4 52.7		7 92.2	17 223.9	149 1962.6	6 79.0	183 2410.4
	County Total	16,497		4 24.2		11 66.7	33 200.0	186 1127.5	8 48.5	242 1466.9
Rolette	County SO	12,481		1 8.0	1 8.0	4 32.0	13 104.2	5 40.1	4 32.0	28 224.3
	Rolla PD	1,483					5 337.2	19 1281.2	1 67.4	25 1685.8
	St. John PD	371								0 0.0
	County Total	14,335		1 7.0	1 7.0	4 27.9	18 125.6	24 167.4	5 34.9	53 369.7
Sargent	County SO	4,062					7 172.3	23 566.2	3 73.9	33 812.4
Sheridan	County SO	1,234		1 81.0			5 405.2	13 1053.5		19 1539.7
Sioux	County SO	4,379								0 0.0
Slope	County SO	663						1 150.8	1 150.8	2 301.7
Stark	County SO	5,674				4 70.5	4 70.5	21 370.1	5 88.1	34 599.2
	Dickinson PD	16,917	1 5.9		5 29.6	37 218.7	63 372.4	335 1980.3	21 124.1	462 2731.0
	Belfield PD	844				1 118.5	2 237.0	2 237.0	1 118.5	6 710.9
	South Heart PD	317					3 946.4			3 946.4
	County Total	22,908	1 4.4		5 21.8	42 183.3	72 314.3	358 1562.8	27 117.9	505 2204.5
Steele	County SO	1,769				1 56.5		1 56.5		2 113.1
Stutsman	County SO	5,941		4 67.3		1 16.8	3 50.5	11 185.2	1 16.8	20 336.6
	Jamestown PD	15,164		10 65.9	1 6.6	32 211.0	59 389.1	248 1635.5	28 184.6	378 2492.7
	County Total	21,105		14 66.3	1 4.7	33 156.4	62 293.8	259 1227.2	29 137.4	398 1885.8
Towner	County SO	1,202					4 332.8	8 665.6	2 166.4	14 1164.7
	Cando PD	1,033					2 193.6	18 1742.5		20 1936.1
	County Total	2,235					6 268.5	26 1163.3	2 89.5	34 1521.3
Traill	County SO	4,757					13 273.3	26 546.6	7 147.2	46 967.0
	Mayville PD	1,830					3 163.9	1 54.6	1 54.6	5 273.2
	Hillsboro PD	1,522								0 0.0
	County Total	8,109					16 197.3	27 333.0	8 98.7	51 628.9
Walsh	County SO	7,008				5 71.3	17 242.6	39 556.5	8 114.2	69 984.6
	Grafton PD	4,052		2 49.4	1 24.7	3 74.0	15 370.2	73 1801.6	9 222.1	103 2542.0
	County Total	11,060		2 18.1	1 9.0	8 72.3	32 289.3	112 1012.7	17 153.7	172 1555.2

* Includes 22 index offenses reported by NDSCS PD.

County	Reporting Jurisdiction	Population	Murder/ Non-Negligent Manslaughter	Forcible Rape	Robbery	Aggravated Assault	Burglary	Larceny/ Theft	Motor Vehicle Theft	Total Index Offenses
Ward	County SO	18,319	1 5.5	2 10.9		15 81.9	31 169.2	122 666.0	20 109.2	191 1042.6
	Kenmare PD	1,125					1 88.9			1 88.9
	Minot PD	37,605	1 2.7	27 71.8	5 13.3	80 212.7	69 183.5	602 1600.9	48 127.6	832 2212.5
	Burlington PD	1,043						3 287.6		3 287.6
	Surrey PD	924					1 108.2	1 108.2		2 216.5
	County Total	58,092	2 3.4	29 49.9	5 8.6	95 163.5	102 175.6	728 1253.2	68 117.1	1029 1771.3
Wells	County SO	2,061				2 97.0	3 145.6	5 242.6	1 48.5	11 533.7
	Harvey PD	1,604				4 249.4	3 187.0	29 1808.0	1 62.3	37 2306.7
	Fessenden PD	493						1 202.8		1 202.8
	County Total	4,158				6 144.3	6 144.3	35 841.8	2 48.1	49 1178.5
Williams	County SO	7,748		1 12.9		7 90.3	21 271.0	51 658.2	15 193.6	95 1226.1
	Tioga PD	N/A	DID NOT REPORT IN 2010							
	Williston PD	13,569	1 7.4	11 81.1	3 22.1	26 191.6	27 199.0	245 1805.6	31 228.5	344 2535.2
	Reporting Agency Total	21,317	1 4.7	12 56.3	3 14.1	33 154.8	48 225.2	296 1388.6	46 215.8	439 2059.4

ARREST ANALYSIS

Arrests in 2010

Although primarily an indication of law enforcement activity, the number of arrests reported does provide a limited profile of the perpetrators of crime, especially for those crimes that have high clearance rates. Differing arrest practices, policies, and enforcement emphases among agencies influence the volume of arrests for various offenses, particularly those against public order such as vagrancy, disorderly conduct, and related violations. However, arrests for serious crimes, e.g., robbery or burglary, are more likely to be uniform throughout all jurisdictions across the state.

The UCR program requires that an arrest be counted for each separate occasion an individual is taken into custody. Although several charges may be lodged against a person at the time of the arrest, only one arrest is counted for each time the person is taken into custody.

North Dakota law enforcement agencies reported 29,404 arrests in 2010. A total of 28,925 arrests was reported in 2009.

In 2010, more than 21 percent of total arrests were arrests of juveniles.

More than 70 percent of the total was arrests of males.

Arrests for the crime index offenses of murder/non-negligent manslaughter, forcible rape, robbery, aggravated assault, burglary, larceny/theft and motor vehicle theft comprised 11.3 percent of the total reported arrests. Of the 3,326 reported arrests for crime index offenses, 32.6 percent were arrests of juveniles.

The total of 11,800 reported arrests for DUI and liquor law violations represents 40.1 percent of the total arrests reported in the state of North Dakota in 2010. Arrests for DUI increased from 5,819 in 2009 to 6,050 in 2010. Liquor law violation arrests increased 5.5 percent from 5,449 in 2009 to 5,750 reported in 2010.

More than 79 percent of total arrests were white; over 15 percent were Native American.

These statistics are provided by local law enforcement agencies that contribute to the North Dakota UCR program. No arrest figures for reservations in the state are included in these totals. Tribal law enforcement agencies do not participate in the state UCR program.

Total Arrests Reported, 2010

Offense Classification	Number Reported	Percent of Total Arrests
Murder/Non-Negligent Manslaughter	8	*
Negligent Manslaughter	1	*
Forcible Rape	43	0.1%
Robbery	32	0.1
Aggravated Assault	354	1.2
Burglary	247	0.8
Larceny/Theft	2,487	8.5
Motor Vehicle Theft	155	0.5
Other Assaults	1,977	6.7
Arson	10	0.0
Forgery and Counterfeiting	80	0.3
Fraud	627	2.1
Embezzlement	36	0.1
Stolen Property Offenses	157	0.5
Vandalism	505	1.7
Weapons Offenses	165	0.6
Prostitution	5	*
Other Sex Offenses	90	0.3
Drug Abuse Violations	2,339	8.0
Gambling		
Offenses Against Family and Children	132	0.4
Driving Under the Influence	6,050	20.6
Liquor Law Violations	5,750	19.6
Disorderly Conduct	2,252	7.7
Vagrancy		
All Other Offenses	5,028	17.1
Suspicion		
Curfew and Loitering	268	0.9
Runaways	606	2.1
Arrest Total	29,404	100.0

* Less than 0.1 percent of total arrests.

Comparison of Reported Arrests, 2009-2010

Offense Classification	2009	2010	Percent Change
Murder/Non-Negligent Manslaughter	7	8	14.3%
Negligent Manslaughter	7	1	-85.7
Forcible Rape	26	43	65.4
Robbery	37	32	-13.5
Aggravated Assault	360	354	-1.7
Burglary	306	247	-19.3
Larceny/Theft	2,485	2,487	0.1
Motor Vehicle Theft	179	155	-13.4
Other Assaults	2,047	1,977	-3.4
Arson	14	10	-28.6
Forgery and Counterfeiting	90	80	-11.1
Fraud	709	627	-11.6
Embezzlement	31	36	16.1
Stolen Property Offenses	126	157	24.6
Vandalism	518	505	-2.5
Weapons Offenses	168	165	-1.8
Prostitution	4	5	25.0
Other Sex Offenses	89	90	1.1
Drug Abuse Violations	2,063	2,339	13.4
Gambling	1	0	-100.0
Offenses Against Family and Children	185	132	-28.6
Driving Under the Influence	5,819	6,050	4.0
Liquor Law Violations	5,449	5,750	5.5
Disorderly Conduct	1,843	2,252	22.2
Vagrancy	0	0	0.0
All Other Offenses	5,542	5,028	-9.3
Suspicion	0	0	0.0
Curfew and Loitering	296	268	-9.5
Runaways	524	606	15.6
Arrest Total	28,925	29,404	1.7

Juvenile and Adult Arrests, 2010

Offense Classification	Juvenile	Adult	Age Not Reported	Total
Murder/Non-Negligent Manslaughter		8		8
Negligent Manslaughter		1		1
Forcible Rape	17	26		43
Robbery	5	27		32
Aggravated Assault	39	315		354
Burglary	71	176		247
Larceny/Theft	895	1,592		2,487
Motor Vehicle Theft	57	98		155
Other Assaults	397	1,580		1,977
Arson	4	6		10
Forgery and Counterfeiting	5	75		80
Fraud	14	611	2	627
Embezzlement	2	34		36
Stolen Property Offenses	63	94		157
Vandalism	234	270	1	505
Weapons Offenses	16	149		165
Prostitution		5		5
Other Sex Offenses	33	57		90
Drug Abuse Violations	380	1,957	2	2,339
Gambling				
Offenses Against Family and Children	50	81	1	132
Driving Under the Influence	52	5,994	4	6,050
Liquor Law Violations	972	4,774	4	5,750
Disorderly Conduct	902	1,348	2	2,252
Vagrancy				
All Other Offenses	1,145	3,879	4	5,028
Suspicion				
Curfew and Loitering	268			268
Runaways	606			606
Arrest Total	6,227	23,157	20	29,404

Arrests by Gender, 2010

Offense Classification	Male	Female	Total
Murder/Non-Negligent Manslaughter	8		8
Negligent Manslaughter	1		1
Forcible Rape	42	1	43
Robbery	27	5	32
Aggravated Assault	306	48	354
Burglary	220	27	247
Larceny/Theft	1,307	1,180	2,487
Motor Vehicle Theft	121	34	155
Other Assaults	1,376	601	1,977
Arson	8	2	10
Forgery and Counterfeiting	47	33	80
Fraud	380	247	627
Embezzlement	16	20	36
Stolen Property Offenses	125	32	157
Vandalism	419	86	505
Weapons Offenses	153	12	165
Prostitution	2	3	5
Other Sex Offenses	89	1	90
Drug Abuse Violations	1,792	547	2,339
Gambling			
Offenses Against Family and Children	56	76	132
Driving Under the Influence	4,639	1,411	6,050
Liquor Law Violations	3,703	2,047	5,750
Disorderly Conduct	1,704	548	2,252
Vagrancy			
All Other Offenses	3,716	1,312	5,028
Suspicion			
Curfew and Loitering	160	108	268
Runaways	282	324	606
Arrest Total	20,699	8,705	29,404

Arrests by Race, 2010

Offense Classification	White	Black	Native American	Asian	Total
Murder/Non-Negligent Manslaughter	8				8
Negligent Manslaughter	1				1
Forcible Rape	37	2	4		43
Robbery	13	8	11		32
Aggravated Assault	233	37	82	2	354
Burglary	192	13	42		247
Larceny/Theft	1,757	150	565	15	2,487
Motor Vehicle Theft	107	7	41		155
Other Assaults	1,382	173	415	7	1,977
Arson	10				10
Forgery and Counterfeiting	57	4	19		80
Fraud	550	28	49		627
Embezzlement	33	2	1		36
Stolen Property Offenses	100	21	34	2	157
Vandalism	375	20	108	2	505
Weapons Offenses	148	5	11	1	165
Prostitution	3	1	1		5
Other Sex Offenses	73	10	7		90
Drug Abuse Violations	1,948	109	273	9	2,339
Gambling					
Offenses Against Family and Children	83	4	43	2	132
Driving Under the Influence	5,309	129	599	13	6,050
Liquor Law Violations	4,802	140	791	17	5,750
Disorderly Conduct	1,659	171	417	5	2,252
Vagrancy					
All Other Offenses	3,820	266	936	6	5,028
Suspicion					
Curfew and Loitering	204	18	44	2	268
Runaways	420	55	130	1	606
Arrest Total	23,324	1,373	4,623	84	29,404

Arrest Analysis by Reporting Jurisdiction

The table below contains arrest totals for each reporting agency in 2010. Juvenile and adult arrests as well as arrests reported without age information are included.

Arrests by Reporting Jurisdiction, 2010

Agency	Murder/Non-Neg. Mansl.	Negligent Manslaughter	Forcible Rape	Robbery	Aggravated Assault	Burglary	Larceny/Theft	Motor Vehicle Theft	Other Assault	Arson	Forgery/Counterfeiting	Fraud	Embezzlement	Stolen Property Offenses	Vandalism	Weapons Offenses	Prostitution	Other Sex Offenses	Drug Abuse Violations	Gambling Violations	Off. Against Fam & Children	DUI	Liquor Law Violations	Disorderly Conduct	Vagrancy	All Other Offenses	Suspicion	Curfew/Loitering	Runaway	Total
Adams SO									7	1							1	3				12	4	3						31
Barnes SO									2													6	3							11
Valley City PD					1	9	1	14						7	2	3		1	14			61	16	7		12			1	149
Benson SO					2	2	2	2	2									1	1			6	3	5		4				28
Billings SO									2																	2				4
Medora PD									1										1			5		3						10
Bottineau SO						2	5		1											4			108			6				126
Bowman SO																						1	1	1		1				4
Bowman PD	DID NOT REPORT IN 2010																													
Scranton PD	DID NOT REPORT IN 2010																													
Burke SO					1				3			1			2				9		1	6	11			9				43
Powers Lake PD	DID NOT REPORT IN 2010																													
Burleigh SO		2			8	4	3	4	38			99			8	2		3	42		3	142	230	24		203			18	833
Bismarck PD	1	6	9	75	26	539	20	295		11	67	19	36	85	16		20	275		11	438	602	423			705	89	137	3905	
Lincoln PD								6													1	6	7			1		1	22	
Cass SO					2	2	2		16					2	2	3		2	34		1	61	90	3		22			2	244
Fargo PD		15	12	99	98	882	20	402	3	19	35		47	78	30	4	13	382		4	824	1331	500			856	43	111	5808	
West Fargo PD		2	1	14	10	59	9	143	2	5	3		4	16	4		5	103		15	110	102	26		115	18	25	791		
NDSU PD					1		1	1	4										9		43	167	28			32	4		292	
Cavalier SO						7	1	2			3				11				1		9	6	2			6			48	
Dickey SO					2						2	45						1	1		1	10	11			6			80	
Ellendale PD							1															4				1			6	
Oakes PD					2		1							1								4	4			10		1	24	
Divide SO	DID NOT REPORT IN 2010																													
Crosby PD	DID NOT REPORT IN 2010																													
Dunn SO	DID NOT REPORT IN 2010																													
Killdeer PD								5											1			15		2					23	
Eddy SO								2														13		1		2			18	
Emmons SO						1	2		1			3			5	1			1			5	43	2		2			66	
Linton PD	DID NOT REPORT IN 2010																													
Foster SO	DID NOT REPORT IN 2010																													
Carrington PD							1	1	1						1							9	2	7		1			23	
Golden Valley SO								3						1												3		1	8	
Grand Forks SO	1					3		21			21				2	1			19		3	62	60	11		499		5	708	
Emerado PD					1		2	2	2	1					3						1	4	2	4					22	

Agency	Murder/Non-Neg. Mansl.	Negligent Manslaughter	Forcible Rape	Robbery	Aggravated Assault	Burglary	Larceny/Theft	Motor Vehicle Theft	Other Assault	Arson	Forgery/Counterfeiting	Fraud	Embezzlement	Stolen Property Offenses	Vandalism	Weapons Offenses	Prostitution	Other Sex Offenses	Drug Abuse Violations	Gambling Violations	Off. Against Fam & Children	DUI	Liquor Law Violations	Disorderly Conduct	Vagrancy	All Other Offenses	Suspicion	Curfew/Loitering	Runaway	Total
Grand Forks PD			8	3	35	17	264	15	197	1	7	24	13	14	57	6		6	90		21	285	526	287		226	12	117	2231	
Larimore PD									4													2		1				1	8	
Northwood PD					1		1		1																				3	
Thompson PD															2														2	
UND PD							2	1	1			2				1			15			60	265	5		18	3	373		
Grant SO			1				4		1						3		2	2						1		5		19		
Elgin PD						1																						1		
Griggs SO					1		1		4							3			3			7	15	1		2		1	38	
Hettinger SO								1														3	2						6	
Kidder SO									1					1								3		1		1			7	
Steele PD					1		1					1			2				1				1	1		1			9	
LaMoure SO									5										1			16				1			23	
Kulm PD	DID NOT REPORT IN 2010																													
LaMoure PD	DID NOT REPORT IN 2010																													
Logan SO							1		1													2	2			12			18	
Napoleon PD						1	2									1						5				47			56	
McHenry SO							2	1	6					1					1			17	4			3			35	
McIntosh SO	1					2	1	2	6		1	9						1				8	2	1		3			37	
Wishek PD	DID NOT REPORT IN 2010																													
McKenzie SO																							3						3	
Watford City PD		1			1		4	3	18			4			3	8		1	26		3	46	15	9		13			155	
McLean SO			1		2	12	4		20					1	14	1		1	8			48	53	7		28		1	201	
Mercer SO			2			5			2					1	2	2			31		1	13	10	3		18		2	92	
Beulah PD					2				15													41	16	25		9			108	
Hazen PD	DID NOT REPORT IN 2010																													
Morton SO							1	2	9			1		1	1				2			66	25	2		80			190	
Mandan PD			1	1	14	5	26	5	62					4	6	1		2	34		17	115	110	54		188	19	7	671	
Mountrail SO							2		6						6	3			8			93	16	5		35			174	
Stanley PD																						15	5	2					22	
Nelson SO				1	1			1	16					2	1				3			11	34	8		9			87	
Oliver SO						1								1								1				1			4	
Center PD	DID NOT REPORT IN 2010																													
Pembina SO								1	3						1				13			17	19	2		4			60	
Cavalier PD									3										4			8	7	2					24	
Pierce SO														1								4	13			2			20	
Rugby PD							2		2					3					3			12	28	6		10			66	
Ramsey SO							1		4					1					6		2	23	1	4		8			50	
Devils Lake PD					7	1	77	7	51		4	2		7	17	1		2	106		17	148	204	150		206	12	2	1021	
Ransom SO						4	2		3		1				3	1			6			7	1	8		3			39	
Lisbon PD				1	2	1	1	1	2						1	1						11	2	3		1			26	
Renville SO						1	1	2	2			9	1			1			2	3		9	15	2		7		1	56	
Mohall PD	DID NOT REPORT IN 2010																													
Sherwood PD									1																				1	
Richland SO	1				2		1		12		1	72			1	1		4			16	21	21	5		59		3	220	
Wahpeton PD					1	2	29	1	27			1		2	22	1	1	2	6		7	34	59	21		90	9	1	316	
NDSCS PD						2			1						1				4			1	8	4		4			25	
Rolette SO					2	1	1	1	13						10				5			29	18	28		5		1	114	

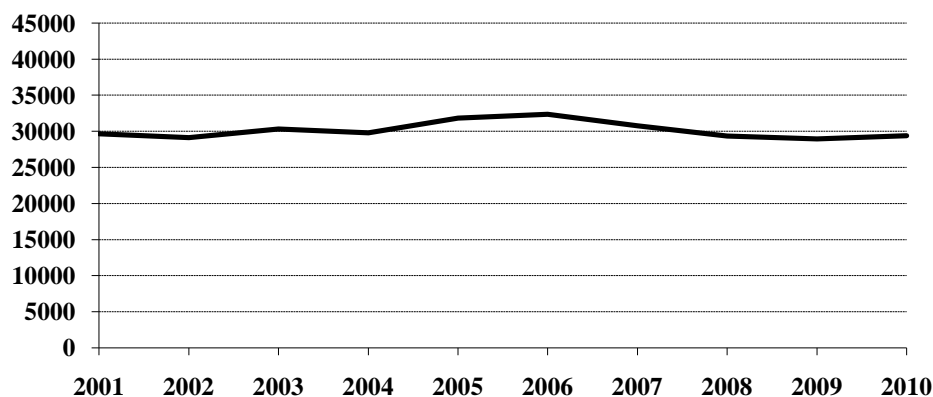
Agency	Murder/Non-Neg. Mansl.	Negligent Manslaughter	Forcible Rape	Robbery	Aggravated Assault	Burglary	Larceny/Theft	Motor Vehicle Theft	Other Assault	Arson	Forgery/Counterfeiting	Fraud	Embezzlement	Stolen Property Offenses	Vandalism	Weapons Offenses	Prostitution	Other Sex Offenses	Drug Abuse Violations	Gambling Violations	Off. Against Fam & Children	DUI	Liquor Law Violations	Disorderly Conduct	Vagrancy	All Other Offenses	Suspicion	Curfew/Loitering	Runaway	Total	
Rolla PD						1	18	1	21					1	1				1			5	10	32		4				95	
St. John PD																															0
Sargent SO							4	1	5			13							6			12	27	2		10				80	
Sheridan SO							1							1				1				7	4	2		1				17	
Sioux SO																		1	1		1	6		1		1				11	
Slope SO									1																					1	
Stark SO					1	1		1	9			99			1	1			6			68	48	6		92				333	
Dickinson PD			2		11	6	58	2	52	1	7	32	1	5	28	7		5	42			133	132	138		231			2	895	
Belfield PD									2										2			10	1							15	
South Heart PD						1			1						2									4						8	
Steele SO					1																	4	3	1		1				10	
Stutsman SO					1	2	4		9		1			1	3				2			18	28	2		21			1	93	
Jamestown PD			2		10	7	65	7	74	2	2	1		1	16	5		3	53			125	195	115		329		27	16	1055	
Towner SO						1									5							1								7	
Cando PD						1	6		4		2		1					1					4	3			15			37	
Traill SO							13		3			1		1	3	1			3			24	18	2		2				71	
Hillsboro PD									1						1							2	3							7	
Mayville PD									1										1			5	1							8	
Walsh SO					1		5	3	7	1		1			7	1			3			22	14	6		5		1	3	80	
Grafton PD			1			1	2	1	16		2				3	1			7			24	33	12		9			1	113	
Ward SO	1		1		7	10	26	5	46			3			18	1		1	13		1	70	53	27		53			14	350	
Kenmare PD									1													2								3	
Minot PD	2			1	20	4	237	9	120		2	24		7	14	4		1	171			389	237	111		233			108	1694	
Burlington PD							1		2										1			2	1			2				9	
Surrey PD							1				1								1			9				2				14	
Wells SO	1					3			1			49	1		1				2			17	14			37				126	
Harvey PD					2		2		7		1				1				4			9	10	14		7			1	58	
Fessenden PD									2							1							3	1							7
Williams SO					5	3	3	2	17						3			1	7		3	82	46	4		25			4	205	
Tioga PD	DID NOT REPORT IN 2010																														
Williston PD			2		13	2	87	4	83		3	2		2	12	7		4	2		1	119	94	56		81		30	18	622	
Highway Patrol					3		2	12	21			2		9	8	39			323			1841	461	11		148				2880	
Drug Task Forces											3								402		1					121				527	

Arrests 2001-2010

Arrest Summary

Year	Population	Arrest Total	% Change from Previous Year	Rate per 100,000 Pop.
2001	634,450	29,638	1.5%	4671.4
2002	634,110	29,145	-1.7	4596.2
2003	634,000	30,334	4.1	4784.5
2004	634,500	29,798	-1.8	4696.3
2005	637,000	31,835	6.8	4997.6
2006	636,000	32,343	1.6	5085.4
2007	640,000	30,780	-4.8	4809.4
2008	641,500	29,334	-4.7	4572.7
2009	647,000	28,925	-1.4	4470.6
2010	672,591	29,404	1.7	4371.8

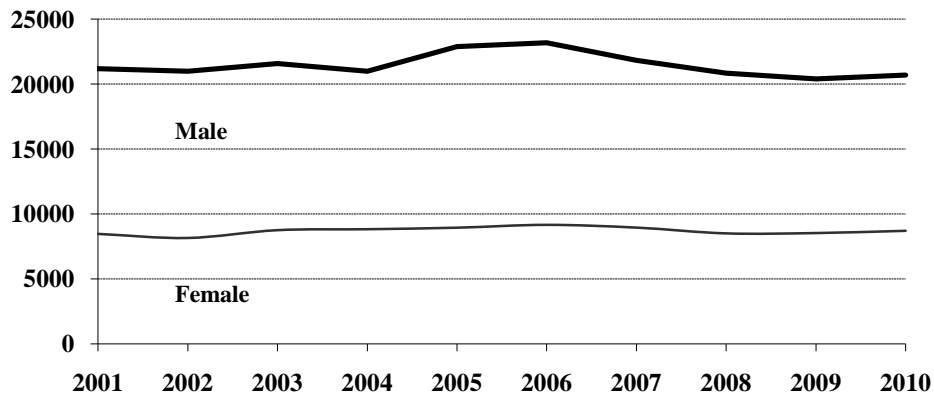
Arrest Totals, 2001-2010



Arrests by Gender, 2001-2010

Year	Male	% of Total	Female	% of Total	Total
2001	21,170	71.4%	8,468	28.6%	29,638
2002	20,991	72.0	8,154	28.0	29,145
2003	21,580	71.1	8,754	28.9	30,334
2004	20,971	70.4	8,827	29.6	29,798
2005	22,891	71.9	8,944	28.1	31,835
2006	23,181	71.7	9,162	28.3	32,343
2007	21,829	70.9	8,951	29.1	30,780
2008	20,828	71.0	8,506	29.0	29,334
2009	20,393	70.5	8,532	29.5	28,925
2010	20,699	70.4	8,705	29.6	29,404

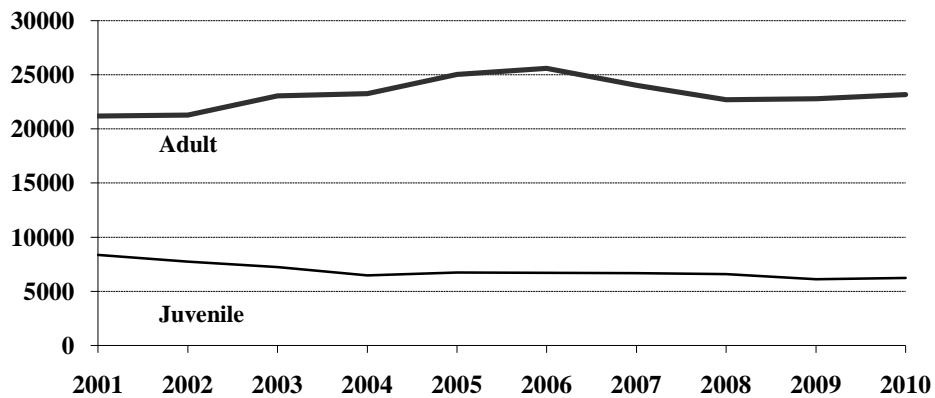
Arrests by Gender, 2001-2010



Juvenile and Adult Arrests, 2001-2010

Year	Juvenile	Percent of Total	Adult	Percent of Total	Age Not Reported	Percent of Total	Total
2001	8,347	28.2%	21,188	71.5%	103	0.3%	29,638
2002	7,742	26.6	21,279	73.0	124	0.4	29,145
2003	7,250	23.9	23,044	76.0	40	0.1	30,334
2004	6,467	21.7	23,247	78.0	84	0.3	29,798
2005	6,721	21.1	25,038	78.6	76	0.2	31,835
2006	6,703	20.7	25,601	79.2	39	0.1	32,343
2007	6,676	21.7	24,037	78.1	67	0.2	30,780
2008	6,593	22.5	22,695	77.4	46	0.1	29,334
2009	6,120	21.2	22,772	78.7	33	0.1	28,925
2010	6,227	21.2	23,157	78.8	20	0.1	29,404

Juvenile and Adult Arrests, 2001-2010



Arrests by Age Group, 2001-2010

Age Group	2001	2002	2003	2004	2005	2006	2007	2008	2009	2010
Under 10	186	168	145	108	73	120	108	106	99	85
10-12	819	638	582	580	500	579	461	465	510	499
13-14	1686	1736	1601	1526	1411	1548	1427	1396	1185	1370
15	1629	1459	1344	1312	1394	1268	1337	1327	1243	1203
16	1943	1810	1677	1409	1630	1460	1641	1606	1585	1485
17	2084	1931	1901	1532	1713	1728	1702	1693	1498	1585
18	2501	2248	2620	2176	2300	2456	2368	2159	2059	1968
19	2845	2528	2832	2638	2647	2654	2647	2369	2371	2337
20	2565	2224	2597	2310	2602	2599	2417	2224	2268	2143
21	1220	1323	1476	1358	1405	1605	1444	1289	1236	1366
22	913	1010	1174	1316	1259	1274	1268	1192	1087	1216
23	817	904	958	1065	1173	1102	1018	1059	959	1040
24	739	753	858	909	1045	1042	996	881	1005	952
25-29	2397	2562	2880	2952	3549	3629	3567	3520	3441	3613
30-34	1932	1990	2021	2140	2331	2371	2100	1983	2108	2209
35-39	1926	1931	1727	1888	2095	1989	1758	1674	1719	1709
40-44	1536	1711	1731	1846	1869	1886	1612	1539	1495	1422
45-49	895	1034	1065	1275	1354	1413	1312	1308	1289	1324
50-54	448	550	557	696	734	814	780	769	934	970
55-59	191	261	303	367	359	414	425	365	449	490
60-64	77	110	118	165	155	183	171	199	187	222
65 +	186	140	127	146	161	170	154	165	165	176
Age Not Reported	103	124	40	84	76	39	67	46	33	20
Arrest Total	29638	29145	30334	29798	31835	32343	30780	29334	28925	29404

Arrests by Offense, 2001-2010

Offense Classification	2001	2002	2003	2004	2005	2006	2007	2008	2009	2010
Murder/Non-Neg. Manslaughter	3	6	2	10	9	6	11	4	7	8
Negligent Manslaughter	1		5	4	3	5	5	6	7	1
Forcible Rape	32	42	40	53	34	45	37	45	26	43
Robbery	19	25	25	15	22	25	29	23	37	32
Aggravated Assault	161	127	136	159	203	214	235	320	360	354
Burglary	343	316	266	223	220	340	235	264	306	247
Larceny/Theft	2238	2264	1924	1856	1830	1700	1979	2366	2485	2487
Motor Vehicle Theft	238	261	227	189	216	220	174	182	179	155
Other Assaults	1664	1798	1691	1656	2015	1989	1982	1947	2047	1977
Arson	60	25	20	24	15	30	24	22	14	10
Forgery and Counterfeiting	186	192	202	170	161	159	111	71	90	80
Fraud	1883	1777	1698	1557	1201	1243	913	646	709	627
Embezzlement	6	4	8	4	15	24	28	30	31	36
Stolen Property Offenses	113	171	148	123	137	124	126	135	126	157
Vandalism	713	802	650	592	572	657	665	557	518	505
Weapons Offenses	138	140	136	198	271	215	174	223	168	165
Prostitution	4		5	15	1	2	6	3	4	5
Other Sex Offenses	87	83	92	94	82	82	62	82	89	90
Drug Abuse Violations	1658	1752	2045	2078	2343	2256	2323	2158	2063	2339
Gambling	4	4		1	4		3	1	1	0
Off. Against Family & Children	245	228	205	221	243	199	177	163	185	132
Driving Under the Influence	4301	4467	4854	5783	5946	6488	6085	5815	5819	6050
Liquor Law Violations	7415	6099	6969	5758	5940	6513	6118	5592	5449	5750
Disorderly Conduct	1636	1565	1691	1529	1657	1753	1586	1835	1843	2252
Vagrancy	4	2	3							
All Other Offenses	5338	6069	6318	6556	7686	7160	6684	5986	5542	5028
Suspicion										
Curfew and Loitering	325	270	339	264	301	224	279	248	296	268
Runaways	823	656	635	666	708	670	729	610	524	606
Arrest Total	29638	29145	30334	29798	31835	32343	30780	29334	28925	29404

Juvenile Arrests by Offense, 2001-2010

Offense Classification	2001	2002	2003	2004	2005	2006	2007	2008	2009	2010
Murder/Non-Neg. Manslaughter							2			
Negligent Manslaughter			1			1		1		
Forcible Rape	9	18	11	10	6	4	8	18	8	17
Robbery	3	9	6	8	4	7	5	4	3	5
Aggravated Assault	28	19	14	22	47	30	31	47	34	39
Burglary	175	166	118	99	55	115	94	97	94	71
Larceny/Theft	1134	1147	919	792	794	699	876	977	992	895
Motor Vehicle Theft	130	146	119	78	103	105	74	84	88	57
Other Assaults	439	485	420	416	482	474	442	465	427	397
Arson	52	15	16	15	10	15	14	7	5	4
Forgery and Counterfeiting	29	35	22	17	15	9	5	2	9	5
Fraud	32	18	23	12	17	29	34	16	11	14
Embezzlement			2		4	4	5	8	3	2
Stolen Property Offenses	54	90	92	51	41	46	43	39	51	63
Vandalism	503	538	410	344	303	362	378	298	254	234
Weapons Offenses	40	36	22	40	41	43	28	43	26	16
Prostitution				10						
Other Sex Offenses	26	32	31	33	20	20	16	20	24	33
Drug Offenses	311	289	249	229	251	264	278	291	293	380
Gambling	1									
Off. Against Family/Children	86	77	64	84	86	107	91	88	88	50
Driving Under the Influence	90	74	90	92	92	100	66	93	79	52
Liquor Law Violations	1890	1645	1741	1304	1255	1469	1341	1217	1029	972
Disorderly Conduct	785	672	738	652	687	714	601	761	729	902
Vagrancy	3									
All Other Offenses	1379	1305	1168	1229	1399	1192	1236	1159	1053	1145
Suspicion										
Curfew and Loitering	325	270	339	264	301	224	279	248	296	268
Runaways	823	656	635	666	708	670	729	610	524	606
Juvenile Arrest Total	8347	7742	7250	6467	6721	6703	6676	6593	6120	6227

Juvenile Arrests by Gender, 2001-2010

Year	Male	% of Total	Female	% of Total	Total
2001	5,298	63.5%	3,049	36.5%	8,347
2002	5,043	65.1	2,699	34.9	7,742
2003	4,568	63.0	2,682	37.0	7,250
2004	3,909	60.4	2,558	39.6	6,467
2005	4,092	60.9	2,629	39.1	6,721
2006	4,240	63.3	2,463	36.7	6,703
2007	4,108	61.5	2,568	38.5	6,676
2008	4,061	61.6	2,532	38.4	6,593
2009	3,759	61.4	2,361	38.6	6,120
2010	3,784	60.8	2,443	39.2	6,227

Adult Arrests by Offense, 2001-2010

Offense Classification	2001	2002	2003	2004	2005	2006	2007	2008	2009	2010
Murder/Non-Neg. Manslaughter	3	6	2	10	9	6	9	4	7	8
Negligent Manslaughter	1		4	4	3	4	5	5	7	1
Forcible Rape	23	24	29	43	28	41	29	27	18	26
Robbery	16	16	19	7	18	18	24	19	34	27
Aggravated Assault	133	108	122	137	156	184	204	270	326	315
Burglary	166	144	148	119	165	224	141	167	211	176
Larceny/Theft	1102	1114	1004	1064	1035	1000	1103	1388	1491	1592
Motor Vehicle Theft	108	114	108	111	113	115	100	98	91	98
Other Assaults	1221	1311	1269	1237	1532	1513	1540	1480	1619	1580
Arson	8	10	4	9	5	15	9	15	9	6
Forgery and Counterfeiting	157	155	180	151	145	149	106	69	81	75
Fraud	1782	1701	1654	1507	1172	1211	845	620	693	611
Embezzlement	6	4	6	4	11	20	23	22	28	34
Stolen Property Offenses	59	80	56	72	96	78	83	96	75	94
Vandalism	204	264	240	246	269	293	287	258	264	270
Weapons Offenses	98	103	114	158	230	172	146	180	142	149
Prostitution	4		5	5	1	2	6	3	4	5
Other Sex Offenses	61	51	61	61	62	62	46	62	65	57
Drug Offenses	1344	1438	1795	1846	2066	1983	2035	1857	1762	1957
Gambling	2	4		1	4		3	1	1	
Off. Against Family/Children	159	151	141	136	157	91	86	75	96	81
Driving Under the Influence	4207	4390	4759	5685	5847	6384	6018	5718	5735	5994
Liquor Law Violations	5520	4449	5222	4449	4674	5038	4775	4369	4418	4774
Disorderly Conduct	851	892	952	876	969	1035	984	1073	1112	1348
Vagrancy	1	2	3							
All Other Offenses	3952	4748	5147	5309	6271	5963	5430	4819	4483	3879
Suspicion										
Adult Arrest Total	21188	21279	23044	23247	25038	25601	24037	22695	22772	23157

Adult Arrests by Gender, 2001-2010

Year	Male	% of Total	Female	% of Total	Total
2001	15,805	74.6%	5,383	25.4%	21,188
2002	15,859	74.5	5,420	25.5	21,279
2003	16,987	73.7	6,057	26.3	23,044
2004	17,004	73.1	6,243	26.9	23,247
2005	18,739	74.8	6,299	25.2	25,038
2006	18,912	73.9	6,689	26.1	25,601
2007	17,677	73.5	6,360	26.5	24,037
2008	16,735	73.7	5,960	26.3	22,695
2009	16,610	72.9	6,162	27.1	22,772
2010	16,901	73.0	6,256	27.0	23,157

Drug Arrest Analysis

Drug offense arrests increased by 13.4 percent from a total of 2,063 in 2009 to 2,339 in 2010. The arrest totals shown should not be interpreted as the number of individuals arrested for drug offenses because it is possible that some individuals may have been arrested on more than one occasion for this offense.

More than 76 percent of drug arrests in 2010 were arrests of males.

Juveniles (persons under the age of 18) comprised 16.2 percent of the total in 2010.

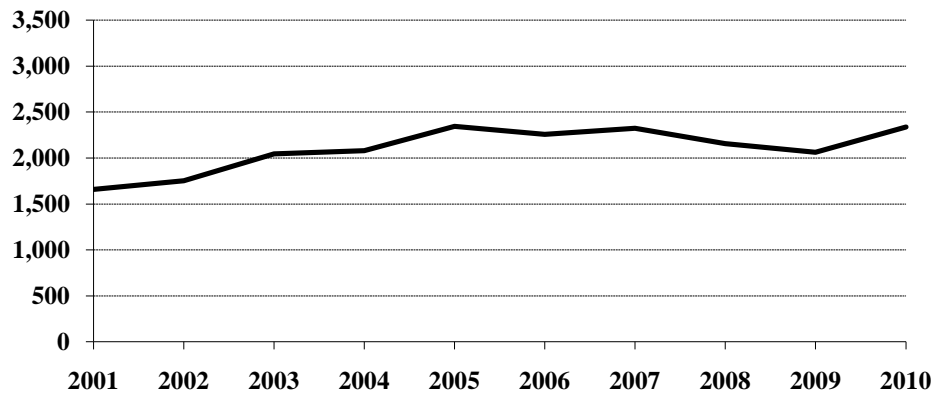
Nearly 89 percent of the drug arrests during the 10-year period were arrests for possession rather than sale or manufacture of drugs.

More than 71 percent of the arrests for drug offenses during the period 2001-2010 involved marijuana.

Arrests for Drug Offenses, 2001-2010

Year	Total	Percent Change from Previous Year
2001	1,658	10.5%
2002	1,752	5.7
2003	2,045	16.7
2004	2,078	1.6
2005	2,343	12.8
2006	2,256	-3.7
2007	2,323	3.0
2008	2,158	-7.1
2009	2,063	-4.4
2010	2,339	13.4

Arrests for Drug Offenses, 2001-2010



Drug Arrests by Gender, 2001-2010

Year	Male	% of Total	Female	% of Total	Total
2001	1,298	78.3%	360	21.7%	1,658
2002	1,340	76.5	412	23.5	1,752
2003	1,593	77.9	452	22.1	2,045
2004	1,595	76.8	483	23.2	2,078
2005	1,738	74.2	605	25.8	2,343
2006	1,762	78.1	494	21.9	2,256
2007	1,774	76.4	549	23.6	2,323
2008	1,642	76.1	516	23.9	2,158
2009	1,631	79.1	432	20.9	2,063
2010	1,792	76.6	547	23.4	2,339

Drug Arrests by Age Category, 2001-2010

Year	Juvenile	Percent of Total	Adult	Percent of Total	Age Not Reported	Percent of Total	Total
2001	311	18.7%	1,344	81.1%	3	0.2%	1,658
2002	289	16.5	1,438	82.1	25	1.4	1,752
2003	249	12.2	1,795	87.8	1	*	2,045
2004	229	11.0	1,846	88.8	3	0.1	2,078
2005	251	10.7	2,066	88.2	26	1.1	2,343
2006	264	11.7	1,983	87.9	9	0.4	2,256
2007	278	12.0	2,035	87.6	10	0.4	2,323
2008	291	13.5	1,857	86.0	10	0.5	2,158
2009	293	14.2	1,762	85.4	8	0.4	2,063
2010	380	16.2	1,957	83.7	2	0.1	2,339

*Less than 0.1 percent of total drug arrests.

Drug Arrests by Age Group, 2001-2010

Age Group	2001	2002	2003	2004	2005	2006	2007	2008	2009	2010
Under 10										
10-12	3	4	3	4	5	4	2	4	3	6
13-14	36	29	33	29	20	34	39	31	31	43
15	50	43	34	40	42	38	47	60	40	81
16	95	93	66	68	90	79	92	91	97	116
17	127	120	113	88	94	109	98	105	122	134
18	151	159	195	163	195	187	209	195	170	182
19	172	152	175	186	197	169	196	175	179	174
20	143	142	157	160	193	180	182	151	161	184
21	115	105	117	117	121	132	148	141	134	147
22	75	83	115	135	124	119	136	126	107	154
23	63	58	87	111	106	98	95	100	99	97
24	42	67	75	110	107	97	106	78	113	108
25-29	155	186	272	250	326	319	385	303	258	303
30-34	131	119	151	190	203	217	155	171	164	201
35-39	133	137	158	129	153	156	136	114	113	111
40-44	103	145	159	168	163	145	111	129	84	97
45-49	43	58	85	82	109	91	87	105	89	80
50-54	12	24	38	33	45	52	59	45	55	64
55-59	3	3	8	9	18	16	22	17	26	40
60-64	2		1	1	1	4	3	5	7	13
65 +	1		2	2	5	1	5	2	3	2
No Age Data	3	25	1	3	26	9	10	10	8	2
Total	1658	1752	2045	2078	2343	2256	2323	2158	2063	2339

Drug Arrests by Type of Offense, 2001-2010

Year	Sale or Manufacture	% of Total	Possession	% of Total	Total
2001	118	7.1%	1,540	92.9%	1,658
2002	134	7.6	1,618	92.4	1,752
2003	143	7.0	1,902	93.0	2,045
2004	318	15.3	1,760	84.7	2,078
2005	284	12.1	2,059	87.9	2,343
2006	298	13.2	1,958	86.8	2,256
2007	217	9.3	2,106	90.7	2,323
2008	250	11.6	1,908	88.4	2,158
2009	257	12.5	1,806	87.5	2,063
2010	338	14.5	2,001	85.5	2,339

Drug Arrests by Age Category and Type of Offense, 2001-2010

Year	Juvenile		Adult		Age Not Reported	
	Sale or Manufacture	Possession	Sale or Manufacture	Possession	Sale or Manufacture	Possession
2001	7	304	111	1,233		3
2002	20	269	110	1,328	4	21
2003	20	229	123	1,672		1
2004	28	201	289	1,557	1	2
2005	17	234	259	1,807	8	18
2006	27	237	268	1,715	3	6
2007	19	259	196	1,839	2	8
2008	33	258	217	1,640		10
2009	17	276	240	1,522		8
2010	20	360	318	1,639		2

Drug Arrests by Type of Drug, 2001-2010

Year	Opiates, Cocaine or Derivatives	Percent of Total	Marijuana	Percent of Total	Other Drugs or Narcotics	Percent of Total	Total
2001	33	2.0%	1,221	73.6%	404	24.4%	1,658
2002	61	3.5	1,189	67.9	502	28.6	1,752
2003	62	3.0	1,428	69.9	555	27.1	2,045
2004	38	1.8	1,333	64.2	707	34.0	2,078
2005	53	2.3	1,516	64.7	774	33.0	2,343
2006	53	2.3	1,621	71.9	582	25.8	2,256
2007	50	2.2	1,783	76.7	490	21.1	2,323
2008	49	2.3	1,681	77.9	428	19.8	2,158
2009	44	2.1	1,533	74.3	486	23.6	2,063
2010	29	1.3	1,722	73.6	588	25.1	2,339

Drug Arrests by Age Category and Type of Drug, 2001-2010

Year	Juvenile			Adult			Age Not Reported		
	Opiates, Cocaine or Deriv.	Marijuana	Other Drugs or Narcotics	Opiates, Cocaine or Deriv.	Marijuana	Other Drugs or Narcotics	Opiates, Cocaine or Deriv.	Marijuana	Other Drugs or Narcotics
2001		269	42	33	950	361		2	1
2002	4	251	34	55	923	460	2	15	8
2003	3	206	40	59	1,221	515		1	
2004	3	162	64	35	1,170	641		1	2
2005	2	220	29	51	1,288	727		8	18
2006	1	229	34	52	1,389	542		3	6
2007	1	244	33	49	1,532	454		7	3
2008	5	237	49	44	1,438	375		6	4
2009	2	237	54	42	1,292	428		4	4
2010	1	297	82	28	1,423	506		2	

DUI Arrest Analysis

Reported DUI arrests increased 4 percent from 5,819 in 2009 to 6,050 in 2010. The arrest totals should not be interpreted as the number of individuals arrested for DUI offenses because it is possible that some individuals may have been arrested on more than one occasion.

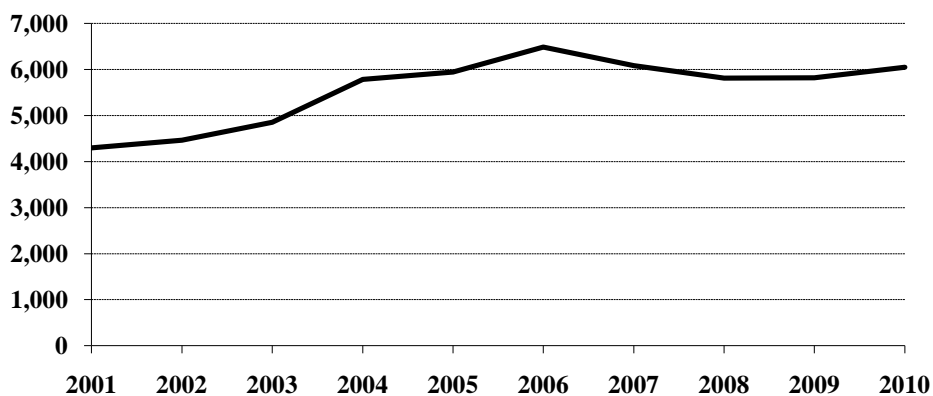
More than 76 percent of the DUI arrests in 2010 were arrests of males.

Juveniles, persons under the age of 18, made up 0.9 percent of the total in 2010.

DUI Arrests, 2001-2010

Year	DUI Arrests Reported	Percent Change from Previous Year
2001	4,301	-0.1%
2002	4,467	3.9
2003	4,854	8.7
2004	5,783	19.1
2005	5,946	2.8
2006	6,488	9.1
2007	6,085	-6.2
2008	5,815	-4.4
2009	5,819	0.1
2010	6,050	4.0

DUI Arrests, 2001-2010



DUI Arrests by Gender, 2001-2010

Year	Male	% of Total	Female	% of Total	Total
2001	3,450	80.2%	851	19.8%	4,301
2002	3,545	79.4	922	20.6	4,467
2003	3,763	77.5	1,091	22.5	4,854
2004	4,459	77.1	1,324	22.9	5,783
2005	4,640	78.0	1,306	22.0	5,946
2006	4,956	76.4	1,532	23.6	6,488
2007	4,620	75.9	1,465	24.1	6,085
2008	4,449	76.5	1,366	23.5	5,815
2009	4,391	75.5	1,428	24.5	5,819
2010	4,639	76.7	1,411	23.3	6,050

DUI Arrests by Age Category, 2001-2010

Year	Juvenile	Percent of Total	Adult	Percent of Total	Age Not Reported	Percent of Total	Total
2001	90	2.1%	4,207	97.8%	4	0.1%	4,301
2002	74	1.6	4,390	98.3	3	0.1	4,467
2003	90	1.9	4,759	98.0	5	0.1	4,854
2004	92	1.6	5,685	98.3	6	0.1	5,783
2005	92	1.6	5,847	98.3	7	0.1	5,946
2006	100	1.5	6,384	98.4	4	0.1	6,488
2007	66	1.1	6,018	98.9	1	*	6,085
2008	93	1.6	5,718	98.3	4	0.1	5,815
2009	79	1.4	5,735	98.5	5	0.1	5,819
2010	52	0.9	5,994	99.0	4	0.1	6,050

*Less than 0.1 percent of total drug arrests.

DUI Arrests by Age Group, 2001-2010

Age Group	2001	2002	2003	2004	2005	2006	2007	2008	2009	2010
Under 10										
10-12										
13-14	1	3	2	3	1	1	1	2		
15	6	6	10	8	5	10	2	8	7	2
16	35	17	25	33	31	28	17	25	27	12
17	48	48	53	48	55	61	46	58	45	38
18	112	114	161	142	121	161	127	121	110	81
19	135	155	195	212	206	187	166	158	138	128
20	145	182	219	205	219	196	166	173	169	135
21	269	276	354	362	344	431	381	340	359	350
22	232	260	300	417	372	373	381	338	300	356
23	197	238	267	305	345	357	339	314	316	307
24	209	188	260	293	278	336	336	304	292	293
25-29	641	660	775	867	1051	1060	1117	1083	1082	1204
30-34	526	507	526	621	596	735	719	641	654	711
35-39	519	511	436	590	590	624	570	581	554	644
40-44	499	520	480	576	603	621	527	512	514	512
45-49	337	339	354	468	481	560	517	507	501	545
50-54	187	232	214	288	309	346	301	309	377	335
55-59	78	97	120	178	171	199	198	168	205	206
60-64	43	51	46	93	86	98	91	94	90	110
65 +	78	60	52	68	75	100	82	75	74	77
No Age Data	4	3	5	6	7	4	1	4	5	4
Total	4301	4467	4854	5783	5946	6488	6085	5815	5819	6050

UCR OFFENSE DEFINITIONS

UNIFORM CRIME REPORTING OFFENSE DEFINITIONS

Offenses in Uniform Crime Reporting are divided into two groups designated as Part I and Part II crimes. Information on the number of Part I offenses known to law enforcement, the number cleared by arrest or exceptional means, and the number of persons arrested is reported monthly. Arrest data are reported for Part I and Part II offenses. The Crime Index is composed of offenses 1-7 with the exception as noted in item 1 below.

NOTE: The classifications of these offenses for UCR reporting purposes are based on law enforcement investigation as opposed to determination by a court, medical examiner, jury, or other judicial hearing.

PART I OFFENSES:

1. CRIMINAL HOMICIDE

a. Murder and Non-Negligent Manslaughter

The willful (non-negligent) killing of one human being by another. Deaths caused by negligence, attempts to kill, assaults to kill, suicides, accidental deaths, and justifiable homicides are excluded. Justifiable homicides are limited to: (1) the killing of a felon by a law enforcement officer in the line of duty, and (2) the killing of a felon by a private citizen.

b. Manslaughter by Negligence

The killing of another person through gross negligence. Excludes traffic fatalities. While manslaughter by negligence is a Part I crime, it is not included in the Crime Index.

2. FORCIBLE RAPE

The carnal knowledge of a female forcibly and against her will. Included are rapes by force and attempts or assaults to rape. Statutory offenses (no force used -- victim under age of consent) are excluded.

3. ROBBERY

The taking or attempting to take anything of value from the care, custody, or control of a person or persons by force or threat of force or violence, or putting the victim in fear.

4. AGGRAVATED ASSAULT

An unlawful act by one person upon another for the purpose of inflicting severe or aggravated bodily injury. This type of assault usually is accompanied by the use of a weapon or by a means likely to produce death or great bodily harm. Simple assaults are excluded.

5. BURGLARY

Breaking or entering. The unlawful entry of a structure to commit a felony or theft. Attempted forcible entry is included.

6. LARCENY/THEFT

The unlawful taking, carrying, leading, or riding away of property from the possession or constructive possession of another. Examples are thefts of bicycles or automobile accessories, shoplifting, pocket-picking, or the stealing of any property or article that is not taken by force and violence or by fraud. Attempted larcenies are included. Embezzlement, "con" games, forgery, worthless checks, etc., are excluded.

7. MOTOR VEHICLE THEFT

The theft or attempted theft of a motor vehicle. A motor vehicle is self-propelled and runs on the surface and not on rails. Specifically excluded from this category are motorboats, construction equipment, airplanes, and farming equipment.

8. ARSON

Any willful or malicious burning or attempting to burn, with or without intent to defraud, a dwelling house, public building, motor vehicle, personal property of another, etc.

PART II OFFENSES:

9. OTHER ASSAULTS (SIMPLE)

Assaults or attempted assaults where no weapon was used or which did not result in serious or aggravated injury to the victim.

10. FORGERY AND COUNTERFEITING

Making, altering, uttering, or possessing, with the intent to defraud, anything false which is made to appear true. Attempts are included.

11. FRAUD

Fraudulent conversion and obtaining money or property by false pretenses. Included are larceny by bailee and bad checks except forgeries and counterfeiting. Attempts are included.

12. EMBEZZLEMENT

Misappropriation or misapplication of money or property entrusted to one's care, custody or control. Attempts are included.

13. STOLEN PROPERTY -- BUYING, RECEIVING, POSSESSING

Buying, receiving, or possessing stolen property, including attempts.

14. VANDALISM

Willful or malicious destruction, injury, disfigurement, or defacement of any public or private property, real or personal, without consent of the owner or person having custody or control. Attempts are included.

15. WEAPON OFFENSES -- CARRYING, POSSESSING, ETC.

All violations of regulations or statutes controlling the carrying, using, possessing, furnishing, and manufacturing of deadly weapons or silencers. Attempts are included.

16. PROSTITUTION AND COMMERCIALIZED VICE

Sex offenses of a commercialized nature, such as prostitution, keeping a bawdy house, procuring, or transporting women for immoral purposes. Attempts are included.

17. OTHER SEX OFFENSES (except forcible rape, prostitution and commercialized vice)

Statutory rape and offenses against chastity, common decency, morals and the like. Attempts are included.

18. DRUG ABUSE VIOLATIONS

State and local offenses relating to narcotic and non-narcotic drugs, such as unlawful possession, sale, use, growing and manufacturing of narcotic and non-narcotic drugs. Attempts are included.

19. GAMBLING

Promoting, permitting, or engaging in illegal gambling.

20. OFFENSES AGAINST FAMILY AND CHILDREN

Non-support, neglect, desertion, or abuse of family and children.

21. DRIVING UNDER THE INFLUENCE

Driving or operating any vehicle or common carrier while drunk or under the influence of liquor or drugs.

22. LIQUOR LAWS

State or local liquor law violations, except "drunkenness" (offense 23) and "driving under the influence" (offense 21).

23. DRUNKENNESS

Drunkenness or intoxication. Excluded is "driving under the influence" (offense 21). This is not a crime in North Dakota, but is included in the national program.

24. DISORDERLY CONDUCT

Breach of peace.

25. VAGRANCY

Vagabondage, begging, loitering, etc.

26. ALL OTHER OFFENSES

All violations of state or local laws, except offenses 1-25 and traffic offenses.

27. SUSPICION

No specific offense; suspect released without formal charges being placed.

28. CURFEW AND LOITERING

Offenses relating to violation of local curfew and loitering ordinances where such laws exist.

29. RUNAWAYS

Limited to juveniles taken into protective custody under provisions of local statutes.

**FULL-TIME LAW
ENFORCEMENT EMPLOYEES**

**NUMBER OF FULL-TIME LAW ENFORCEMENT EMPLOYEES
REPORTED BY UCR AGENCIES
AS OF OCTOBER 31, 2010**

Agency	Law Enforcement Officers		Civilian Personnel		Total Full-Time			Population
	Male	Female	Male	Female	Male	Female	Total	
Adams SO	3	1			3	1	4	2,289
Barnes SO	5	1		1	5	2	7	4,592
Valley City PD	13	1		6	13	7	20	6,477
Benson SO	4				4		4	7,169
Billings SO	4				4		4	754
Medora PD	2				2		2	99
Bottineau SO	10		4		14		14	6,519
Bowman SO	2	1			2	1	3	1,561
Bowman PD	3				3		3	1,563
Scranton PD	1				1		1	NA
Burke SO	4				4		4	1,621
Powers Lake PD							0	252
Burleigh SO	36	5	23	17	59	22	81	16,735
Bismarck PD	90	11	8	20	98	31	129	64,142
Lincoln PD	3				3		3	3,140
Cass SO	57	15	35	31	92	46	138	24,936
Fargo PD	121	23		17	121	40	161	89,694
West Fargo PD	33	2		10	33	12	45	26,409
NDSU PD	11	6	3	6	14	12	26	10,000
Cavalier SO	5		2	4	7	4	11	3,741
Dickey SO	4			1	4	1	5	2,067
Ellendale PD	2				2		2	1,500
Oakes PD	2				2		2	1,797
Divide SO	4				4		4	1,053
Crosby PD	2				2		2	954
Dunn SO	6			1	6	1	7	2,766
Killdeer PD	2				2		2	704
Eddy SO	3	1		1	3	2	5	2,333
Emmons SO	3			1	3	1	4	2,414
Linton PD	1				1		1	1,031
Foster SO	2	1			2	1	3	1,337
Carrington PD	4				4		4	2,001
Golden Valley SO	3			1	3	1	4	1,655
Grand Forks SO	29	1		7	29	8	37	11,853
Grand Forks PD	71	11	5	10	76	21	97	43,382
Larimore PD							0	1,336
Northwood PD	2				2		2	944
Emerado PD	1				1		1	497
Thompson PD	1				1		1	985
UND PD	11	1		2	11	3	14	10,000
Grant SO	3	1			3	1	4	1,844
Elgin PD							0	536
Griggs SO	4			1	4	1	5	2,399
Hettinger SO	2	1			2	1	3	2,399
Kidder SO	3			1	3	1	4	1,606
Steele PD	1				1		1	632
LaMoure SO	4			1	4	1	5	3,175
Kulm PD	1				1		1	NA
LaMoure PD	4		1		5		5	807
Logan SO	2				2		2	1,217
Napoleon PD	1				1		1	702
McHenry SO	6	1			6	1	7	5,295
McIntosh SO	2	1			2	1	3	1,744
Wishek PD	2				2		2	866
McKenzie SO	8			9	8	9	17	4,579
Watford City PD	5				5		5	1,450
McLean SO	16	1	4	10	20	11	31	8,535
Mercer SO	14		3	6	17	6	23	2,865
Beulah PD	5			1	5	1	6	2,976
Hazen PD	4				4		4	2,260
Morton SO	19	1	15		34	1	35	8,462
Mandan PD	23	4	2	7	25	11	36	19,134

Agency	Law Enforcement Officers		Civilian Personnel		Total Full-Time			Population
	Male	Female	Male	Female	Male	Female	Total	
Mountrail SO	8	1	1	5	9	6	15	5,742
Stanley PD	2				2		2	1,329
Nelson SO	4			1	4	1	5	3,195
Oliver SO	4		1		5		5	1,668
Center PD	1				1		1	NA
Pembina SO	7		4	2	11	2	13	6,212
Cavalier PD	4				4		4	1,351
Pierce SO	3		1	3	4	3	7	1,513
Rugby PD	4				4		4	2,566
Ramsey SO	6			1	6	1	7	4,673
Devils Lake PD	15	1	1	1	16	2	18	6,917
Ransom SO	3	1		1	3	2	5	3,486
Lisbon PD	2	1			2	1	3	2,185
Renville SO	4	1			4	1	5	2,062
Mohall PD	1				1		1	NA
Sherwood PD	2				2		2	216
Richland SO	12	1	8	4	20	5	25	8,905
Wahpeton PD	11	3		2	11	5	16	5,592
NDSCS PD	2	1			2	1	3	2,000
Rolette SO	8		4	4	12	4	16	12,481
Rolla PD	4				4		4	1,483
St. John PD							0	371
Sargent SO	4		1		5		5	4,062
Sheridan SO	2				2		2	1,234
Sioux SO	1				1		1	4,379
Slope SO	1				1		1	663
Stark SO	13			3	13	3	16	5,674
Dickinson PD	27		3	10	30	10	40	16,917
Belfield PD	2				2		2	844
South Heart PD		1				1	1	314
Steele SO	3				3		3	1,769
Stutsman SO	8			2	8	2	10	5,941
Jamestown PD	27	2		5	27	7	34	15,164
Towner SO	2		1		3		3	1,202
Cando PD	3				3		3	1,033
Traill SO	7	1		5	7	6	13	4,757
Hillsboro PD	1	1			1	1	2	1,522
Mayville PD							0	1,830
Walsh SO	10		2	4	12	4	16	7,008
Grafton PD	8		1		9		9	4,052
Ward SO	18	4	14	12	32	16	48	18,319
Kenmare PD	3				3		3	1,125
Minot PD	53	7	7	17	60	24	84	37,605
Burlington PD	2				2		2	1,043
Surrey PD	1				1		1	924
Wells SO	3				3		3	2,061
Harvey PD	2	1			2	1	3	1,604
Fessenden PD	1				1		1	493
Williams SO	16	4	11	3	27	7	34	7,748
Tioga PD	3				3		3	NA
Williston PD	22	2	2	6	24	8	32	13,569
Highway Patrol	133	6	19	29	152	35	187	
Total	1172	130	186	292	1358	422	1780	672,591