

**STATE OF NORTH DAKOTA
OFFICE OF ATTORNEY GENERAL**

Criminal Justice Statistics Special Report

Homicide in North Dakota, 2008



**Attorney General
Wayne Stenehjem**

Report prepared by
Colleen Weltz
Bureau of Criminal Investigation
Information Services Section

September 2009

The term "homicide," for purposes of this report, includes the Uniform Crime Reporting (UCR) offenses of murder and non-negligent manslaughter. Homicide refers to the "willful killing of one human being by another." It does not include attempts to kill, assaults to kill, suicides, accidental deaths, justifiable homicides or deaths caused by gross negligence.

HOMICIDE IN 2008

- In 2008, four homicide deaths were known to the Uniform Crime Reporting (UCR) program. Based on a state population estimate of 641,500, the resulting homicide rate for the state of North Dakota was 0.6 per 100,000 population. See Table 2 on page 3 for information regarding rates for previous years.
- **Victim Gender:** Three of the homicide victims were male.
- **Victim Age:** Two of the victims were adults. "Adult" is defined as a person aged 18 or older. See Table 1 on page 2 for a summary of homicide incidents in 2008.
- **Weapons:** Knives were involved in the deaths of two homicide victims.
- **Domestic Violence:** There were no homicides in 2008 resulting from domestic violence incidents. This is a first in over 30 years. See definition on page 12.
- **Assailant Gender:** Six of the seven identified assailants were male.
- **Assailant Age:** All of the identified assailants were adults.
- While tribal law enforcement agencies and any other federal law enforcement entities in the state do not participate in the state UCR program, every effort is made to include all homicide incidents occurring within the state's borders.

**Table 1
Summary of Homicide Incidents
North Dakota, 2008**

| Date & Location of Incident | Victim(s) | | Assailant(s) | | Weapons Used | Relationship of Victim to Assailant | Circumstances |
|---|-----------|-----|----------------|-------------|-----------------|--|--|
| | Age | Sex | Age | Sex | | | |
| 3/1/2008 Devils Lake | 43 | F | 26 | M | Knife | Acquaintance | Offender found victim in home and proceeded to stab her. |
| 4/14/2008 Bismarck | NB | M | 30 | F | Personal Weapon | Babysittee | Shaken Baby Syndrome. |
| 6/4/2008 Bismarck | 30 | M | 21 22 19 | M M M | Knife | Acquaintance Acquaintance Acquaintance | Victim killed in the course of a robbery. |
| 12/11/2008 Fort Berthold Reservation | 16 | M | 21 20 | M M | Personal Weapon | Acquaintance Friend | Argument between victim and assailants. |

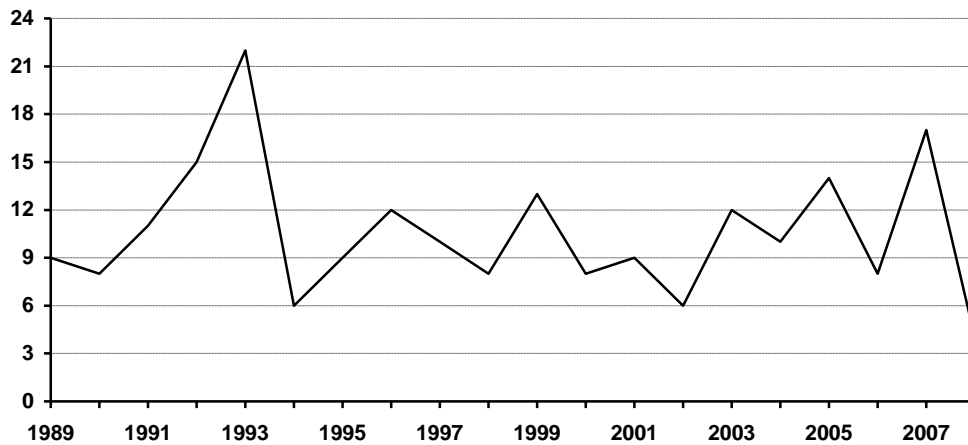
HOMICIDE TOTALS AND RATES

- Table 2 provides yearly homicide totals and homicide rate information for North Dakota during the period 1989-2008.
- The average number of homicide deaths per year during this period is 11.

Table 2
Homicide Rate
North Dakota, 1989-2008

| Year | Homicide Total | Population Estimate | Rate/100,000 Population |
|------|----------------|---------------------|-------------------------|
| 1989 | 9 | 660,000 | 1.4 |
| 1990 | 8 | 638,800 | 1.3 |
| 1991 | 11 | 635,000 | 1.7 |
| 1992 | 15 | 636,000 | 2.4 |
| 1993 | 22 | 635,000 | 3.5 |
| 1994 | 6 | 638,000 | 0.9 |
| 1995 | 9 | 641,000 | 1.4 |
| 1996 | 12 | 644,000 | 1.9 |
| 1997 | 10 | 641,000 | 1.6 |
| 1998 | 8 | 638,000 | 1.3 |
| 1999 | 13 | 634,000 | 2.1 |
| 2000 | 8 | 642,200 | 1.2 |
| 2001 | 9 | 634,450 | 1.4 |
| 2002 | 6 | 634,110 | 0.9 |
| 2003 | 12 | 634,000 | 1.9 |
| 2004 | 10 | 634,500 | 1.6 |
| 2005 | 14 | 637,000 | 2.2 |
| 2006 | 8 | 636,000 | 1.3 |
| 2007 | 17 | 640,000 | 2.7 |
| 2008 | 4 | 641,500 | 0.6 |

Figure 1
Homicide in North Dakota
1989-2008



VICTIM CHARACTERISTICS - GENDER

- Fifty-seven percent of the 211 total homicide victims during the period 1989-2008 were male.

**Table 3
Gender of Homicide Victims
North Dakota, 1989-2008**

| Year | Male | Female | Total |
|--------------------|-------------|---------------|--------------|
| 1989 | 4 | 5 | 9 |
| 1990 | 3 | 5 | 8 |
| 1991 | 4 | 7 | 11 |
| 1992 | 10 | 5 | 15 |
| 1993 | 15 | 7 | 22 |
| 1994 | 2 | 4 | 6 |
| 1995 | 6 | 3 | 9 |
| 1996 | 6 | 6 | 12 |
| 1997 | 7 | 3 | 10 |
| 1998 | 6 | 2 | 8 |
| 1999 | 9 | 4 | 13 |
| 2000 | 4 | 4 | 8 |
| 2001 | 7 | 2 | 9 |
| 2002 | 2 | 4 | 6 |
| 2003 | 6 | 6 | 12 |
| 2004 | 7 | 3 | 10 |
| 2005 | 8 | 6 | 14 |
| 2006 | 4 | 4 | 8 |
| 2007 | 7 | 10 | 17 |
| 2008 | 3 | 1 | 4 |
| Total 1989-2008 | 120 (57%) | 91 (43%) | 211 |

VICTIM CHARACTERISTICS - AGE

- Of the 211 homicides during the period 1989-2008, 82 percent were adults. See Table 4 below.
- Forty-one percent of homicide victims were between the ages of 21 and 40. See Table 5 on the following page for information regarding age and gender of victims.

**Table 4
Homicide Victims
Juvenile and Adult
North Dakota, 1989-2008**

| Year | Juvenile | Adult | Total |
|----------------------------|-----------------|--------------|--------------|
| 1989 | 2 | 7 | 9 |
| 1990 | | 8 | 8 |
| 1991 | 3 | 8 | 11 |
| 1992 | 3 | 12 | 15 |
| 1993 | 7 | 15 | 22 |
| 1994 | | 6 | 6 |
| 1995 | 2 | 7 | 9 |
| 1996 | | 12 | 12 |
| 1997 | | 10 | 10 |
| 1998 | 2 | 6 | 8 |
| 1999 | 2 | 11 | 13 |
| 2000 | | 8 | 8 |
| 2001 | | 9 | 9 |
| 2002 | 2 | 4 | 6 |
| 2003 | 2 | 10 | 12 |
| 2004 | 3 | 7 | 10 |
| 2005 | 2 | 12 | 14 |
| 2006 | 2 | 6 | 8 |
| 2007 | 4 | 13 | 17 |
| 2008 | 2 | 2 | 4 |
| Total 1989-2008 | 38 | 173 | 211 |

**Table 5
Homicide Victims
By Age and Gender
North Dakota, 1989-2008**

| Age | Male | Female | Total |
|------------------|-------------|---------------|--------------|
| Less than 1 year | 10 | 7 | 17 |
| 01-05 | 3 | 3 | 6 |
| 06-10 | 1 | 3 | 4 |
| 11-15 | 1 | 2 | 3 |
| 16-20 | 11 | 10 | 21 |
| 21-25 | 14 | 4 | 18 |
| 26-30 | 15 | 10 | 25 |
| 31-35 | 10 | 8 | 18 |
| 36-40 | 15 | 11 | 26 |
| 41-45 | 8 | 8 | 16 |
| 46-50 | 10 | 10 | 20 |
| 51-55 | 7 | 2 | 9 |
| 56-60 | 2 | 2 | 4 |
| 61-65 | 1 | 2 | 3 |
| Over 65 | 12 | 9 | 21 |
| Total 1989-2008 | 120 | 91 | 211 |

WEAPONS AND VICTIM CHARACTERISTICS

- Forty-two percent of deaths due to homicide during the period 1989-2008 resulted from firearm use. See Table 6 below.
- In homicides involving firearms, the weapon was more likely to be a long gun than a handgun.
- Thirty-two of the 211 total homicide deaths involved the use of "personal weapons." Personal weapons include the use of hands, fists and feet as weapons.

**Table 6
Weapons of Homicide
North Dakota, 1989-2008**

| Year | Handgun | Other Firearm | Knife | Blunt Instrument | Personal Weapon | Other or Unknown | Total |
|------------------------|----------------|----------------------|--------------|-------------------------|------------------------|-------------------------|--------------|
| 1989 | 2 | 3 | 2 | | 1 | 1 | 9 |
| 1990 | 3 | 1 | 2 | 1 | 1 | | 8 |
| 1991 | | 4 | 1 | 1 | | 5 | 11 |
| 1992 | 2 | 6 | 4 | 2 | 1 | | 15 |
| 1993 | 6 | 4 | 5 | 2 | 2 | 3 | 22 |
| 1994 | 1 | 2 | | | | 3 | 6 |
| 1995 | 2 | 2 | 1 | 2 | | 2 | 9 |
| 1996 | 3 | 4 | 4 | | | 1 | 12 |
| 1997 | | 1 | 1 | 2 | 4 | 2 | 10 |
| 1998 | | 3 | 2 | | | 3 | 8 |
| 1999 | 1 | 4 | 3 | 1 | | 4 | 13 |
| 2000 | 2 | 1 | 2 | 1 | 2 | | 8 |
| 2001 | 2 | 3 | 1 | 1 | 2 | | 9 |
| 2002 | 1 | 1 | | | 2 | 2 | 6 |
| 2003 | 4 | 7 | | | 1 | | 12 |
| 2004 | | 5 | | 1 | 1 | 3 | 10 |
| 2005 | 2 | 1 | 1 | 2 | 5 | 3 | 14 |
| 2006 | 1 | | 4 | | 2 | 1 | 8 |
| 2007 | 4 | | 2 | 1 | 6 | 4 | 17 |
| 2008 | | | 2 | | 2 | | 4 |
| Total 1989-2008 | 36 | 52 | 37 | 17 | 32 | 37 | 211 |

- Firearms were used in 24 percent of the homicides of juveniles. Forty-six percent of adult deaths due to homicide involved firearms. See Table 7 below.
- Thirty-eight percent of homicides of males and 47 percent of homicides of females involved the use of firearms. See Table 8.
- Eighteen percent of homicides of males and 17 percent of homicides of females involved knives.

**Table 7
Homicide Victims
By Weapon and Age Category
North Dakota, 1989-2008**

| Weapon | Juvenile | Adult | Total |
|------------------------|-----------------|--------------|--------------|
| Handgun | 2 | 34 | 36 |
| Other Firearm | 7 | 45 | 52 |
| Knife | | 37 | 37 |
| Blunt Instrument | 1 | 16 | 17 |
| Personal Weapon | 14 | 18 | 32 |
| Other or Unknown | 14 | 23 | 37 |
| Total 1989-2008 | 38 | 173 | 211 |

**Table 8
Homicide Victims
By Weapon and Gender
North Dakota, 1989-2008**

| Weapon | Male | Female | Total |
|------------------------|-------------|---------------|--------------|
| Handgun | 22 | 14 | 36 |
| Other Firearm | 23 | 29 | 52 |
| Knife | 22 | 15 | 37 |
| Blunt Instrument | 14 | 3 | 17 |
| Personal Weapon | 19 | 13 | 32 |
| Other or Unknown | 20 | 17 | 37 |
| Total 1989-2008 | 120 | 91 | 211 |

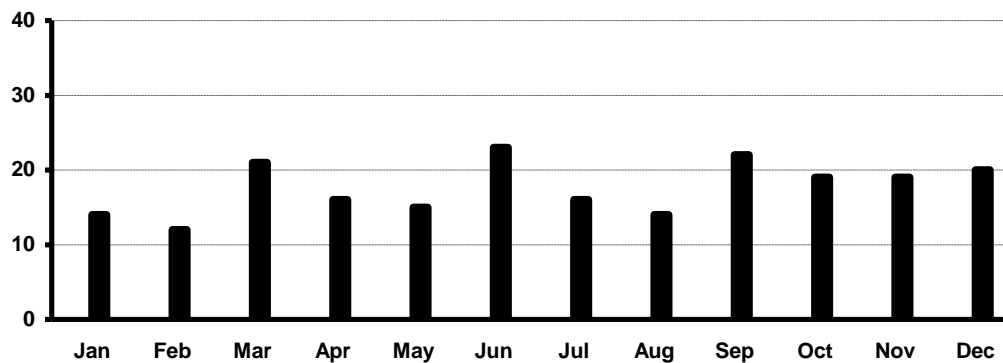
MONTH OF OCCURRENCE

- During the period 1989-2008, the month of June had the highest number of homicide deaths. See Table 9 below. Figure 2 illustrates this information graphically.

Table 9
Deaths Due to Homicide
By Month, 1989-2008

| Month | Number | Percent of Total Homicides |
|-----------------|--------|----------------------------|
| January | 14 | 6.6 % |
| February | 12 | 5.7 |
| March | 21 | 10.0 |
| April | 16 | 7.6 |
| May | 15 | 7.1 |
| June | 23 | 10.9 |
| July | 16 | 7.6 |
| August | 14 | 6.6 |
| September | 22 | 10.4 |
| October | 19 | 9.0 |
| November | 19 | 9.0 |
| December | 20 | 9.5 |
| Total 1989-2008 | 211 | 100.0 |

Figure 2
Homicides by Month of Occurrence
North Dakota, 1989-2008



DOMESTIC VIOLENCE DEATHS

For purposes of this report, domestic violence deaths include those involving a spouse, former spouse, parent, child, persons related by blood or marriage, persons in a present or former dating relationship, persons who are presently residing together or have resided together in the past, persons who have a child in common regardless of whether they are or have been married or have lived together at any time, other persons on premises when a domestic incident occurs, and romantic triangle situations.

- For the period 1989-2008, 52 percent of deaths due to homicide involved domestic violence.

**Table 10
Domestic Violence Deaths
North Dakota, 1989-2008**

| Year | Domestic | Non-Domestic | No Assailant Identified | Homicide Total |
|------------------------|-----------------|---------------------|--------------------------------|-----------------------|
| 1989 | 5 | 3 | 1 | 9 |
| 1990 | 5 | 3 | | 8 |
| 1991 | 5 | 4 | 2 | 11 |
| 1992 | 11 | 4 | | 15 |
| 1993 | 11 | 11 | | 22 |
| 1994 | 4 | 1 | 1 | 6 |
| 1995 | 3 | 6 | | 9 |
| 1996 | 7 | 5 | | 12 |
| 1997 | 2 | 8 | | 10 |
| 1998 | 6 | 2 | | 8 |
| 1999 | 7 | 6 | | 13 |
| 2000 | 6 | 1 | 1 | 8 |
| 2001 | 2 | 7 | | 9 |
| 2002 | 4 | 1 | 1 | 6 |
| 2003 | 8 | 4 | | 12 |
| 2004 | 6 | 4 | | 10 |
| 2005 | 6 | 6 | 2 | 14 |
| 2006 | 4 | 3 | 1 | 8 |
| 2007 | 7 | 9 | 1 | 17 |
| 2008 | | 4 | | 4 |
| Total 1989-2008 | 109 | 92 | 10 | 211 |

- Persons killed in domestic violence incidents were more likely to be killed with a firearm than those killed in non-domestic incidents.
- Fifty-nine percent of female deaths in domestic violence incidents involved firearms, while 21 percent of female deaths in non-domestic violence incidents involved firearms.
- Seventy-one percent of female homicide victims were killed in domestic violence incidents, compared to 37 percent of males.

Table 11
Domestic Violence Deaths
By Type of Weapon and Age Category of Victim
North Dakota, 1989-2008

| Weapon | Domestic | | Non-Domestic | |
|------------------|----------|-------|--------------|-------|
| | Juvenile | Adult | Juvenile | Adult |
| Handgun | | 17 | 2 | 16 |
| Other Firearm | 7 | 34 | | 11 |
| Knife | | 19 | | 17 |
| Blunt Instrument | 1 | 4 | | 11 |
| Personal Weapon | 9 | 5 | 5 | 12 |
| Other or Unknown | 7 | 6 | 6 | 12 |
| Total 1989-2008 | 24 | 85 | 13 | 79 |

Table 12
Domestic Violence Deaths
By Type of Weapon and Gender of Victim
North Dakota, 1989-2008

| Weapon | Domestic | | Non-Domestic | |
|------------------|----------|--------|--------------|--------|
| | Male | Female | Male | Female |
| Handgun | 6 | 11 | 15 | 3 |
| Other Firearm | 14 | 27 | 9 | 2 |
| Knife | 10 | 9 | 11 | 6 |
| Blunt Instrument | 2 | 3 | 11 | |
| Personal Weapon | 5 | 9 | 14 | 3 |
| Other or Unknown | 7 | 6 | 8 | 10 |
| Total 1989-2008 | 44 | 65 | 68 | 24 |

CLEARANCE RATES

- Cases may be "cleared by arrest" of an assailant, or "cleared exceptionally," if a physical arrest cannot be made for reasons beyond the control of law enforcement. An example of an exceptional clearance would be a case in which the assailant committed suicide after killing someone.
- "Clearances" should not be interpreted as "convictions." The information regarding clearances, collected through the Uniform Crime Reporting (UCR) program, reflects law enforcement activity. If an arrest is made, the UCR program considers the case cleared. UCR data does not reflect the results of prosecution of assailants.
- The average clearance rate for homicides in North Dakota during the period from 1989 to 2008 is 95 percent.

Table 13
Clearance Rates for Homicides
North Dakota, 1989-2008

| Year | Total Cleared | Total Homicides | North Dakota Clearance Rate | National Clearance Rate* |
|-------------|----------------------|------------------------|------------------------------------|---------------------------------|
| 1989 | 8 | 9 | 89 | 68 |
| 1990 | 8 | 8 | 100 | 67 |
| 1991 | 9 | 11 | 82 | 67 |
| 1992 | 15 | 15 | 100 | 65 |
| 1993 | 22 | 22 | 100 | 66 |
| 1994 | 5 | 6 | 83 | 64 |
| 1995 | 9 | 9 | 100 | 65 |
| 1996 | 12 | 12 | 100 | 67 |
| 1997 | 10 | 10 | 100 | 66 |
| 1998 | 8 | 8 | 100 | 69 |
| 1999 | 13 | 13 | 100 | 69 |
| 2000 | 7 | 8 | 88 | 63 |
| 2001 | 9 | 9 | 100 | 63 |
| 2002 | 5 | 6 | 83 | 64 |
| 2003 | 12 | 12 | 100 | 62 |
| 2004 | 10 | 10 | 100 | 63 |
| 2005 | 12 | 14 | 86 | 62 |
| 2006 | 7 | 8 | 88 | 61 |
| 2007 | 16 | 17 | 94 | 61 |
| 2008 | 4 | 4 | 100 | Not Available |

* Clearance rates reported in annual Crime in the United States reports published by the FBI.

IDENTIFIED ASSAILANT CHARACTERISTICS - GENDER

- During the period 1989-2008, 87 percent of the 215 identified homicide assailants were male.
- Ten homicides during 1989-2008 have not had an assailant identified by law enforcement.

Table 14
Identified Homicide Assailants
By Gender
North Dakota, 1989-2008

| Year | Male | Female | Total |
|--------------------|-------------|---------------|--------------|
| 1989 | 8 | | 8 * |
| 1990 | 4 | 3 | 7 |
| 1991 | 8 | | 8 * |
| 1992 | 11 | 3 | 14 |
| 1993 | 17 | 3 | 20 |
| 1994 | 4 | 1 | 5 * |
| 1995 | 19 | | 19 |
| 1996 | 13 | 2 | 15 |
| 1997 | 8 | 1 | 9 |
| 1998 | 5 | 3 | 8 |
| 1999 | 9 | 2 | 11 |
| 2000 | 7 | 1 | 8 * |
| 2001 | 11 | | 11 |
| 2002 | 5 | | 5 * |
| 2003 | 9 | | 9 |
| 2004 | 13 | 1 | 14 |
| 2005 | 12 | 1 | 13 * |
| 2006 | 6 | 1 | 7 * |
| 2007 | 14 | 3 | 17 * |
| 2008 | 6 | 1 | 7 |
| Total 1989-2008 | 189 (87%) | 26 (13%) | 215 |

* Indicates that at least one incident for the year does not have an identified assailant.

- Eighty-eight percent of the total 215 assailants identified by law enforcement were adults. See Table 15 below.
- Of the 215 assailants identified by law enforcement, 66 percent were between the ages of 16 and 35. See Table 16 on the following page for information on age and gender of identified assailants.

Table 15
Identified Homicide Assailants
Juvenile and Adult
North Dakota, 1989-2008

| Year | Juvenile | Adult | Total |
|----------------------------|-----------------|------------------|--------------|
| 1989 | 2 | 6 | 8 * |
| 1990 | | 7 | 7 |
| 1991 | 1 | 7 | 8 * |
| 1992 | 2 | 12 | 14 |
| 1993 | 3 | 17 | 20 |
| 1994 | | 5 | 5 * |
| 1995 | 13 | 6 | 19 |
| 1996 | 1 | 14 | 15 |
| 1997 | | 9 | 9 |
| 1998 | 1 | 7 | 8 |
| 1999 | | 11 | 11 |
| 2000 | | 8 | 8 * |
| 2001 | | 11 | 11 |
| 2002 | | 5 | 5 * |
| 2003 | | 9 | 9 |
| 2004 | | 14 | 14 |
| 2005 | | 13 | 13 * |
| 2006 | | 7 | 7 * |
| 2007 | 3 | 14 | 17 * |
| 2008 | | 7 | 7 |
| Total 1989-2008 | 26 (12%) | 189 (88%) | 215 |

* Indicates that at least one incident for the year does not have an identified assailant.

Table 16
Identified Homicide Assailants
By Age and Gender
North Dakota, 1989-2008

| Age | Male | Female | Total |
|------------------------|-------------|---------------|--------------|
| 01-05 | | | 0 |
| 06-10 | | | 0 |
| 11-15 | 12 | 2 | 14 |
| 16-20 | 38 | 3 | 41 |
| 21-25 | 44 | 6 | 50 |
| 26-30 | 26 | 4 | 30 |
| 31-35 | 17 | 3 | 20 |
| 36-40 | 15 | 4 | 19 |
| 41-45 | 10 | 3 | 13 |
| 46-50 | 7 | | 7 |
| 51-55 | 4 | 1 | 5 |
| 56-60 | 8 | | 8 |
| 61-65 | 2 | | 2 |
| Over 65 | 6 | | 6 |
| Total 1989-2008 | 189 | 26 | 215 |

WEAPONS AND IDENTIFIED ASSAILANT CHARACTERISTICS

- In homicide incidents involving firearms, juvenile assailants were much more likely to use firearms other than handguns.
- Male assailants were more likely to use firearms in homicide incidents, while females were more likely to use knives.

Table 17
Identified Assailants
By Type of Weapon and Age Category
North Dakota, 1989-2008

| Weapon | Juvenile | Adult | Total |
|------------------|-----------------|--------------|--------------|
| Handgun | 1 | 32 | 33 |
| Other Firearm | 10 | 39 | 49 |
| Knife | 5 | 42 | 47 |
| Blunt Instrument | 3 | 17 | 20 |
| Personal Weapon | 4 | 31 | 35 |
| Other or Unknown | 3 | 28 | 31 |
| Total 1989-2008 | 26 | 189 | 215 |

Table 18
Identified Assailants
By Type of Weapon and Gender
North Dakota, 1989-2008

| Weapon | Male | Female | Total |
|------------------|-------------|---------------|--------------|
| Handgun | 31 | 2 | 33 |
| Other Firearm | 46 | 3 | 49 |
| Knife | 37 | 10 | 47 |
| Blunt Instrument | 20 | | 20 |
| Personal Weapon | 31 | 4 | 35 |
| Other or Unknown | 24 | 7 | 31 |
| Total 1989-2008 | 189 | 26 | 215 |

- Forty-seven percent of assailants identified by law enforcement were involved in domestic violence incidents. See Table 19 below.
- Assailants were more likely to use firearms in domestic incidents than in non-domestic incidents. See Table 20.
- Knives were more likely to be used by assailants in non-domestic incidents.
- Seventy-seven percent of identified female assailants were involved in domestic incidents, compared to 43 percent for males. See Table 22.

Table 19
Identified Homicide Assailants
Domestic/Non-Domestic Incidents
North Dakota, 1989-2008

| Year | Domestic | Non-Domestic | Total |
|------------------------|------------------|---------------------|--------------|
| 1989 | 4 | 4 | 8 * |
| 1990 | 4 | 3 | 7 |
| 1991 | 4 | 4 | 8 * |
| 1992 | 8 | 6 | 14 |
| 1993 | 8 | 12 | 20 |
| 1994 | 4 | 1 | 5 * |
| 1995 | 4 | 15 | 19 |
| 1996 | 7 | 8 | 15 |
| 1997 | 2 | 7 | 9 |
| 1998 | 6 | 2 | 8 |
| 1999 | 6 | 5 | 11 |
| 2000 | 6 | 2 | 8 * |
| 2001 | 2 | 9 | 11 |
| 2002 | 4 | 1 | 5 * |
| 2003 | 6 | 3 | 9 |
| 2004 | 6 | 8 | 14 |
| 2005 | 7 | 6 | 13 * |
| 2006 | 4 | 3 | 7 * |
| 2007 | 9 | 8 | 17 * |
| 2008 | | 7 | 7 |
| Total 1989-2008 | 101 (47%) | 114 (53%) | 215 |

* Indicates that at least one incident for the year does not have an identified assailant.

Table 20
Weapon Use by Identified Assailants
Domestic/Non-Domestic Incidents
North Dakota, 1989-2008

| Weapon | Domestic | Non-Domestic | Total |
|------------------------|-----------------|---------------------|--------------|
| Handgun | 17 | 16 | 33 |
| Other Firearm | 31 | 18 | 49 |
| Knife | 19 | 28 | 47 |
| Blunt Instrument | 4 | 16 | 20 |
| Personal Weapon | 15 | 20 | 35 |
| Other or Unknown | 15 | 16 | 31 |
| Total 1989-2008 | 101 | 114 | 215 |

Table 21
Domestic/Non-Domestic Incidents
By Type of Weapon and Age Category of Assailant
North Dakota, 1989-2008

| Weapon | Domestic | | Non-Domestic | |
|------------------------|-----------------|--------------|---------------------|--------------|
| | Juvenile | Adult | Juvenile | Adult |
| Handgun | | 17 | 1 | 15 |
| Other Firearm | 1 | 30 | 9 | 9 |
| Knife | 2 | 17 | 3 | 25 |
| Blunt Instrument | | 4 | 3 | 13 |
| Personal Weapon | 2 | 13 | 2 | 18 |
| Other or Unknown | 1 | 14 | 2 | 14 |
| Total 1989-2008 | 6 | 95 | 20 | 94 |

Table 22
Domestic/Non-Domestic Incidents
By Type of Weapon and Gender of Assailant
North Dakota, 1989-2008

| Weapon | Domestic | | Non-Domestic | |
|------------------------|-----------------|---------------|---------------------|---------------|
| | Male | Female | Male | Female |
| Handgun | 16 | 1 | 15 | 1 |
| Other Firearm | 28 | 3 | 18 | |
| Knife | 11 | 8 | 26 | 2 |
| Blunt Instrument | 4 | | 16 | |
| Personal Weapon | 12 | 3 | 19 | 1 |
| Other or Unknown | 10 | 5 | 14 | 2 |
| Total 1989-2008 | 81 | 20 | 108 | 6 |